



**EDVEX** DOOR ENTRY

CATALOGUE ENGLISH

**VIEW**  
IoT smart life

**IP and SIP**  
**Video door entry systems.**  
Solutions for building and  
VoIP infrastructure.



# View: an ecosystem of smart products and interconnected systems.

**View is a unique platform that includes connected systems and products for new builds, refurbishments or to modernise existing systems.** It entails a combination of solutions designed to favour comfort, energy efficiency and security, with matching styling, along with products customised to match all architectural styles. These interconnected products and systems liaise with one another continuously and in a perfectly integrated way to provide a concrete solution to the needs of those who build and enjoy spaces.



Full integration, even with products of different brands

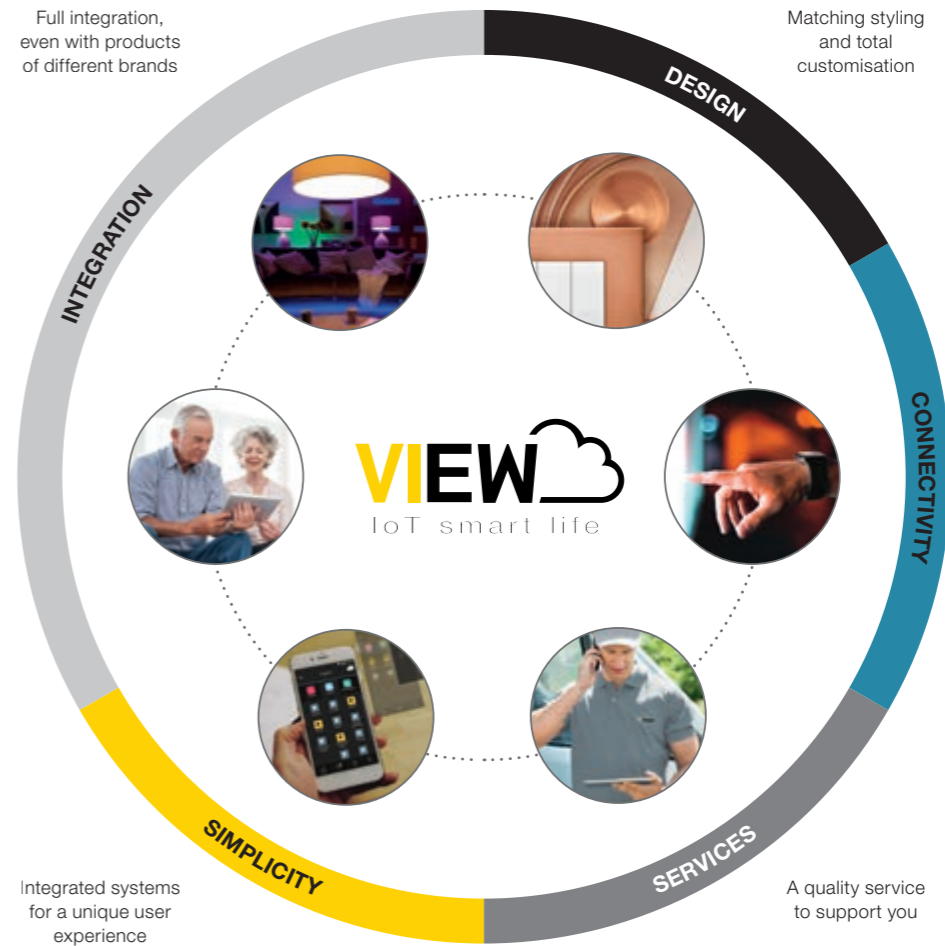
Matching styling and total customisation

Solutions designed to ensure comfort, security and energy efficiency

Connected systems and products, to ensure maximum control

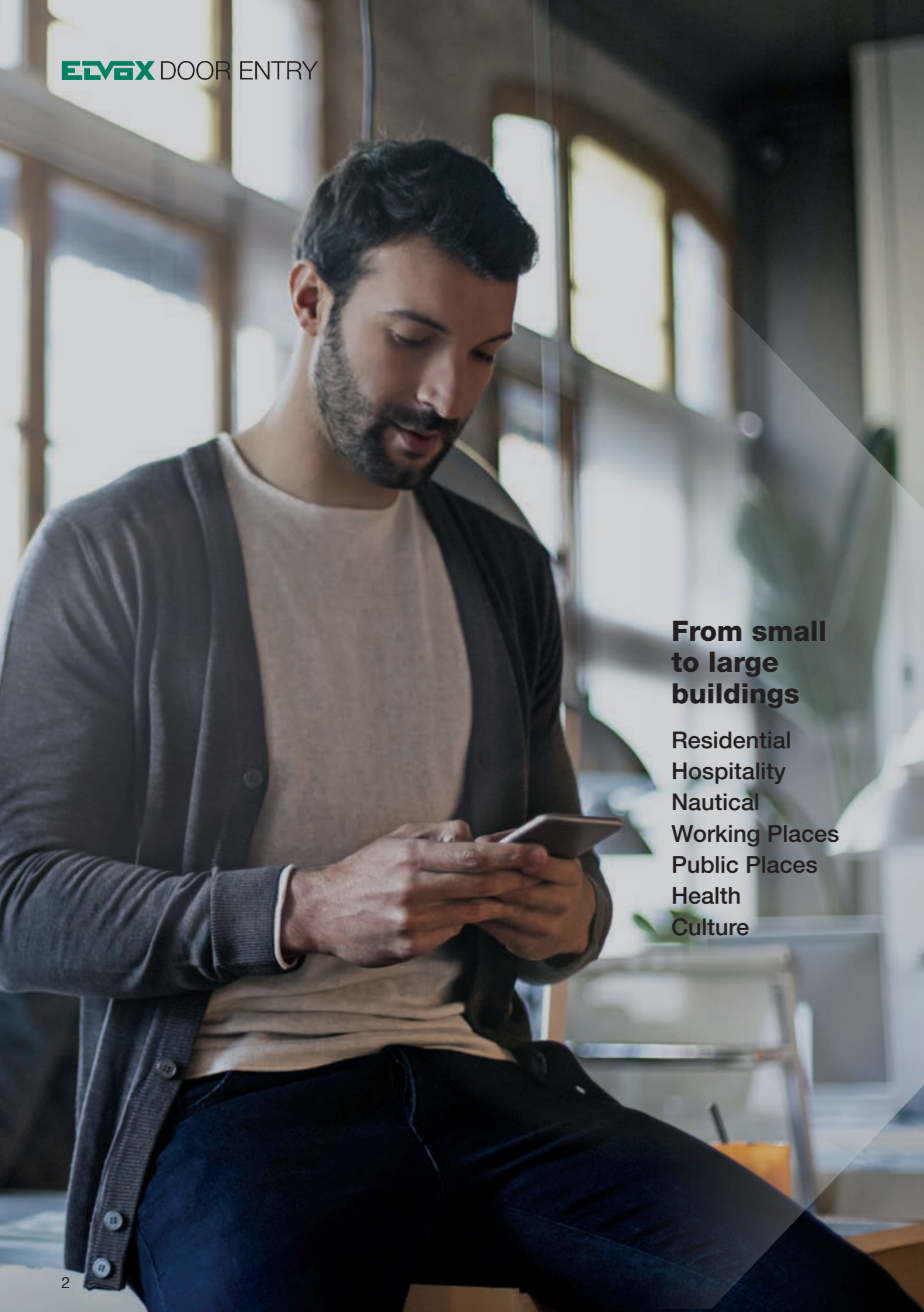
Integrated systems for a unique user experience

A quality service to support you



App View

**A single app:** a unique experience and a user-friendly interface. You can manage, control and create scenarios. You can integrate the app with the IFTTT platform to integrate third-party devices. With the View app and Vimar Cloud, you're connected to your spaces wherever you are and are always up-to-date on what's going on inside and outside the building. Simply connected to your world.

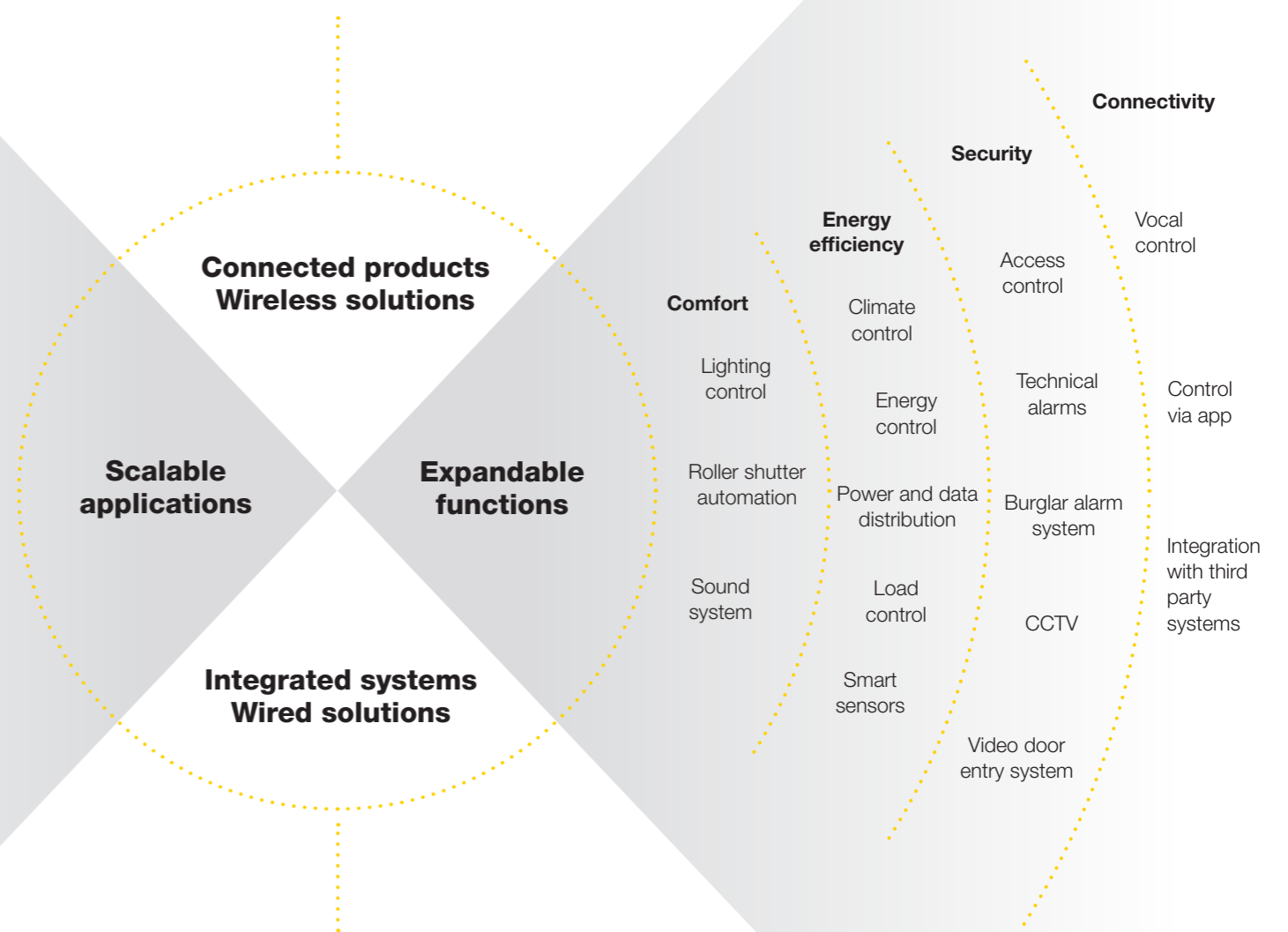


**From small to large buildings**

- Residential
- Hospitality
- Nautical
- Working Places
- Public Places
- Health
- Culture

**Versatile solutions.**

Our solutions respect the identity of each setting. You can expand your ecosystem in a smart, simple and constant way, for total control of your home and of the building.



# Elvox Door Entry

with IP and SIP technologies for unlimited communication.

**High-performance technologies to multiply solutions.**

**IP** and **SIP** technologies enable large systems realization, guaranteeing high performance in any type of building. High-performance systems able to meet with high precision to structured and complex requests for the management of video door entry calls.



Video door entry systems on infrastructure with LAN network and remote calls to mobile devices.



Video door entry systems for Internet calls to VoIP devices.



**Outer and inner units.**

The **outer units** are available in various dimensions and can be mounted in various ways, but they all have one thing in common: an elegant and sophisticated design in keeping with the most demanding architectural requirements. The **inner video door entry system** stations, hands-free or with a handset, feature exquisite, modern, prized finishes and are thinner than traditional devices. Top-quality materials, stylish silhouettes, prized finishes for functional styling and totally user-friendly operation.



**Pixel and Pixel Heavy.**

Modular entrance panels with a light and modern design, Pixel made of aluminium and Pixel Heavy in zamak, more resistant to the shocks and atmospheric agents.

**Pixel Up.**

Made of 316 stainless steel with brushed finish, black metal, champagne, copper and black painted distinguished by a linear design and by a reduced protrusion from the wall, of just 3 mm.

**Tab 7S, Tab 7 IP and 7" SIP video entryphones.**

The IP and SIP video entryphone are stylish and versatile. The Tab 7S IP and 7" SIP video entryphones are integrated with Wi-Fi connection for call forwarding and video entry system management by Video Door app.

**Porter switchboard.**

**Accessible from a web browser without the need of a PC**, the porter switchboard is a management hub and it is able to perfectly coordinate the communication flows between the various workstations. It ensures continuous, smart and advanced management of calls even in contexts such as large residential complexes.

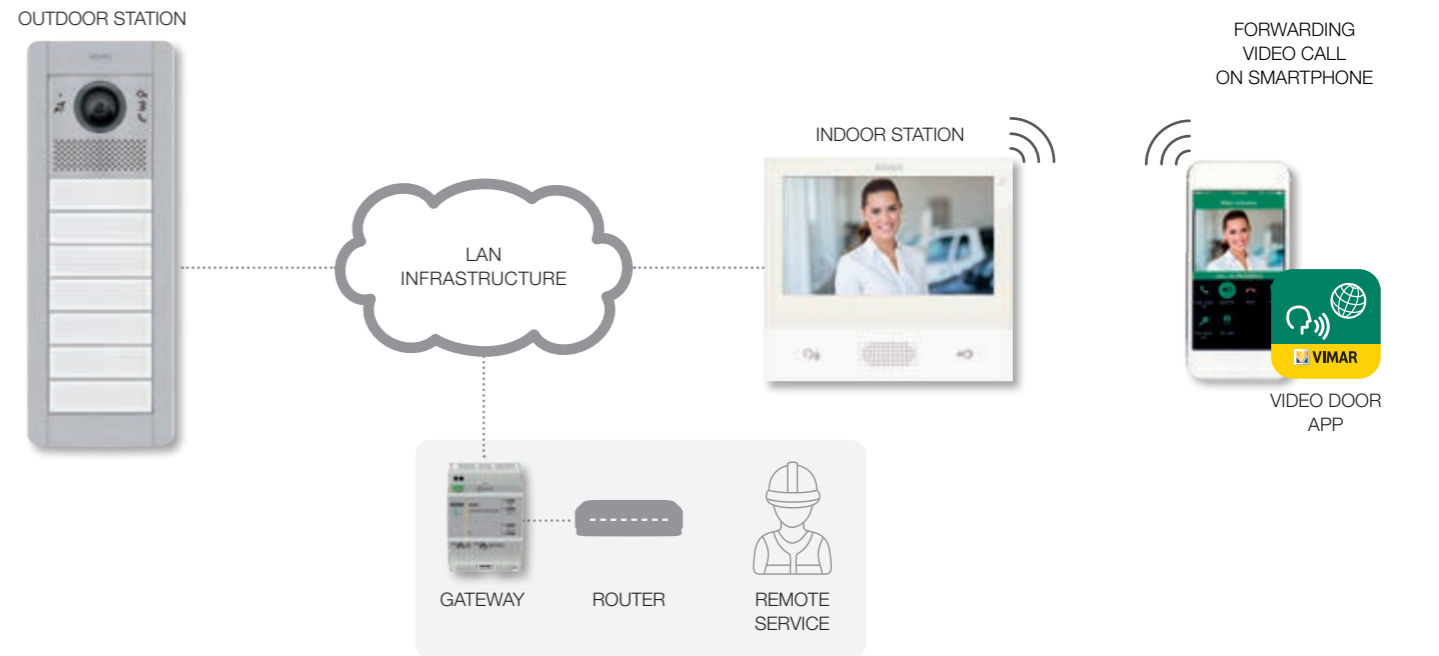




# IP Technology, limitless.



**A system based on IP technology enables advanced video door entry systems realization**, increasing performances, audio/video communications between inner and outer stations become multiples and simultaneous and the users are potentially infinite. All this is simply, also through the use of an existing LAN networks, without any specific wiring and using the Video Door app.



## PERFORMANCES

### Incomparable expansion.

Expansion of video door entry systems to a large number of users through the use of dedicated or shared LAN networks, if already present.

### Remote management by smartphone and tablet.

It is possible with **Video Door** app to receive a video call, to control the CCTV cameras (if connected) or open the door of your home, wherever you are.

### Simple configuration.

Self-configuring for kits, or configurable using the Video Door IP Manager software from a PC for all installations, from the smallest to the most complex, all made simple by the autodiscovery function for Elvox IP video door entry system devices. Installation is always quick and functional, supporting the needs of professionals. The licences are supplied with USB keys, by web, mail or into MyVimar website user area.

### Full coverage.

Performance is enhanced, and audio and video signal quality is guaranteed and protected, whatever the size of the building complex. For efficient, high-performance communication.

### Guaranteed reliability.

The system data is replicated on the different devices, ensuring constant system operation. Everything is always under control. Thanks to the new **IP gateway** it is possible to remotely operate on the parameters of the entrance panels and manage the access control credentials.

### Scalability and versatility.

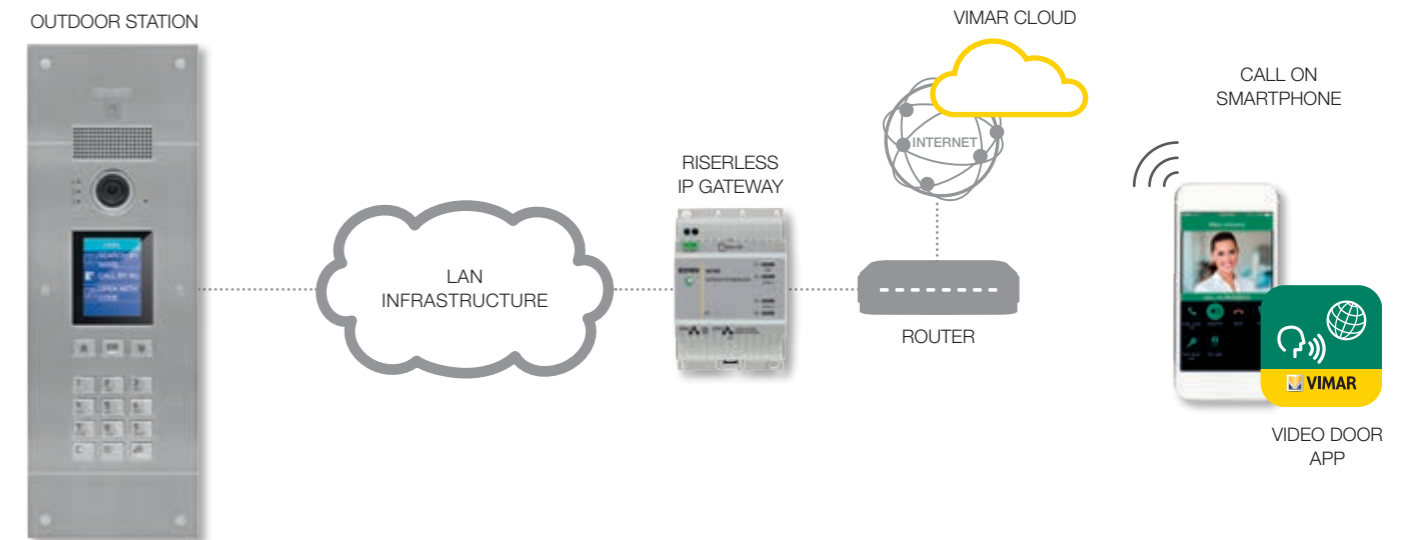
The IP video door entry system was designed to respond in the simplest way to the needs of all kinds of buildings: from single homes to large residential complexes.



## Riserless IP technology, with call service via Cloud.



**Video door entry systems with riserless IP technology** forward directly the video door entry calls from the outer unit to the smartphone by **Video Door** app, without the need for a physical internal unit in the apartment. This is possible because a gateway and a licenses kits for audio / video calls have been installed.



### PERFORMANCES

#### Up to 1600 calls.

In the same IP system, it is possible to install up to **16 riserless IP gateways**, each gateway can manage calls **from 100 apartments** and up to **5 mobile devices** (e.g. smartphones) per apartment, which can simultaneously receive the same call.

#### Call licenses.

Loading the licenses into the riserless gateway, it allows the audio / video calls from outer units to mobile devices by **Video Door** app. The licences are supplied with USB keys, by web, mail or into MyVimar website user area.

#### User remote control with smartphone and tablet.

The **gateway** and **Video Door** app allow the following video door entry functions from mobile devices: receive calls, activate the outer units or a CCTV camera from smartphone, activate the outer unit lock, activate auxiliary services, communicate with the porter switchboard if present, send and receive text messages from the porter.

#### Plant manager remote management.

The registrations and access credentials of users and apartments are managed by the system administrator through **View Vimar portal** that enables remote management of multiple systems.

#### Guaranteed reliability.

The system data is replicated on the different devices, ensuring constant system operation. Everything is always under control.

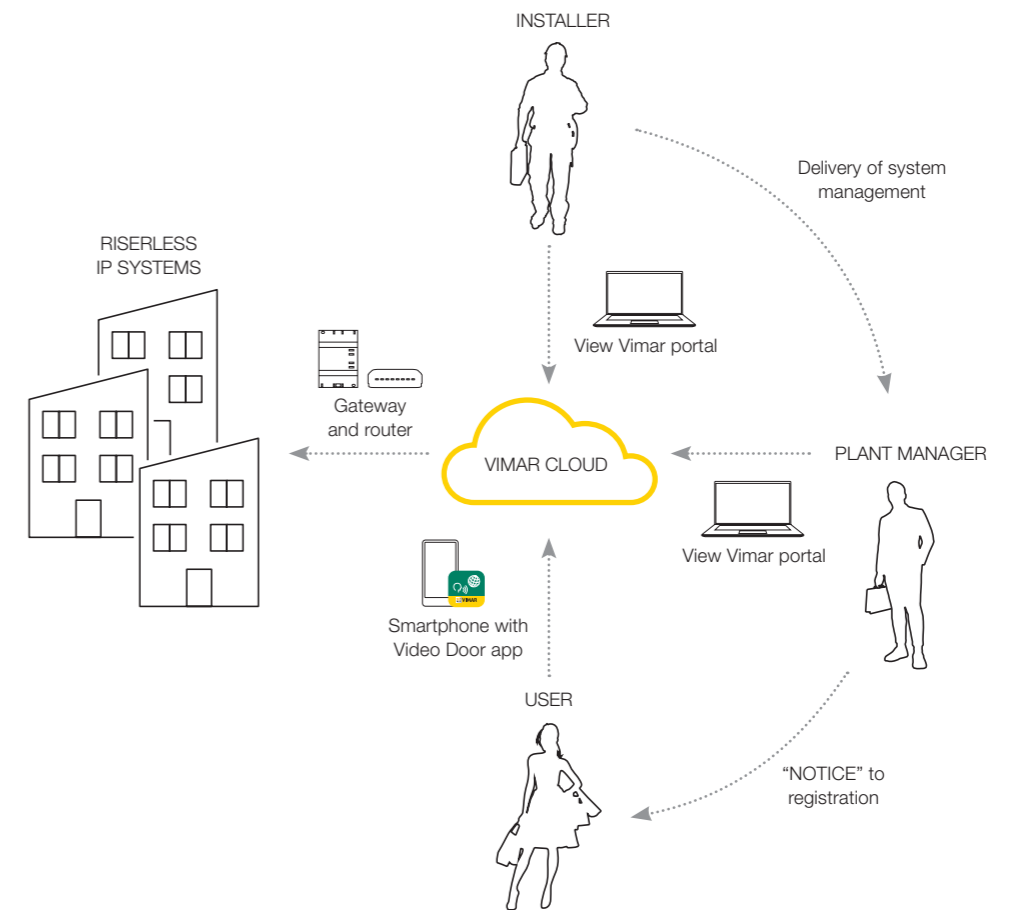
#### Scalability and versatility.

The IP video door entry system was designed to respond in the simplest way to the needs of all kinds of buildings: from single homes to large residential complexes.



## View Vimar portal, for the management of riserless IP systems.

The management, configuration and use of riserless IP video door entry systems takes place through a new dedicated Web portal and some specific person, which interact with the system: plant manager, installer and user.



### ADVANTAGES

#### Installer.

The installer can offer solutions to replace "old" intercom systems with smart video door systems (retrofit of multi-wire audio system), without removing the existing cables in the riser. The new cabling will be reserved only for the horizontal IP backbone between the entrance panels, IP cameras, IP input / output devices and Ethernet switches.

From the new View Vimar portal, the installer can remotely interact with the systems for maintenance and management of access permissions.

#### Plant manager.

The plant manager can remotely supervise multiple systems, give administration roles of single systems to other operators, manage user data, send via e-mail to users the request for registration to the system, send general messages to users, enable and disable user system credentials, manage access control credentials and manage the licenses assigned to single system.

To each license can be associated up to 5 mobile devices, which answer simultaneously to the same calls.

#### User.

Users with smartphones and Video Door app can use the following video door entry functions: answer entrance panel and porter switchboard calls, activate the door lock and auxiliary services (switch on staircase lights, garden irrigation, etc.), switch on the entrance panel, view the video surveillance cameras (if connected), communicate with the porter switchboard if present, send and receive text messages from the porter.

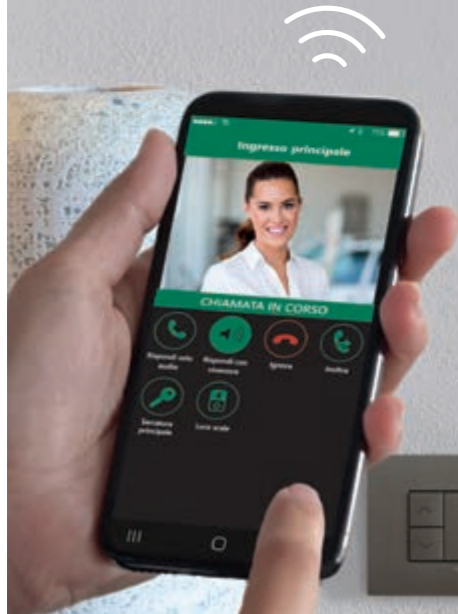
Each user can simultaneously receive calls on 5 different mobile devices, for each member of the family.

# Functions for extra control with the Video Door App.



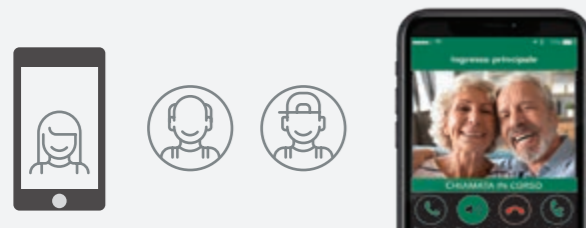
### Very simple configuration.

In just a few steps, you can associate the Video Door App with the video door entry functions of your system thanks to the use of intuitive wizards.



### Intercom calls.

In addition to talking between two video door entryphones in the same building, thanks to the Video Door App - from each system manageable - you can also make calls to and from the associated mobile device. Immediate and direct dialogue with your home, but also with your loved ones who, if they need help, can call your smartphone directly from the video entryphone.



### Opening the entrance gate.

When you're not at home, but you need to let someone onto your property, you can open the gate from your smartphone or tablet. Problem solved.



### Activating auxiliary functions.

When on holiday or simply out and about, a simple tap on your smartphone or tablet will ensure your garden gets exactly the amount of water it needs, for instance; or you can open gates, garages and doors, turn on the lights in the garden or along the path.



### Controlling all the cameras.

The video entryphone or smartphone and tablet give you round-the-clock control over all spaces, and you can keep an eye on things at all times. You can view the images of the cameras associated with the system or activate the video entryphone camera, without anyone ringing at the door.

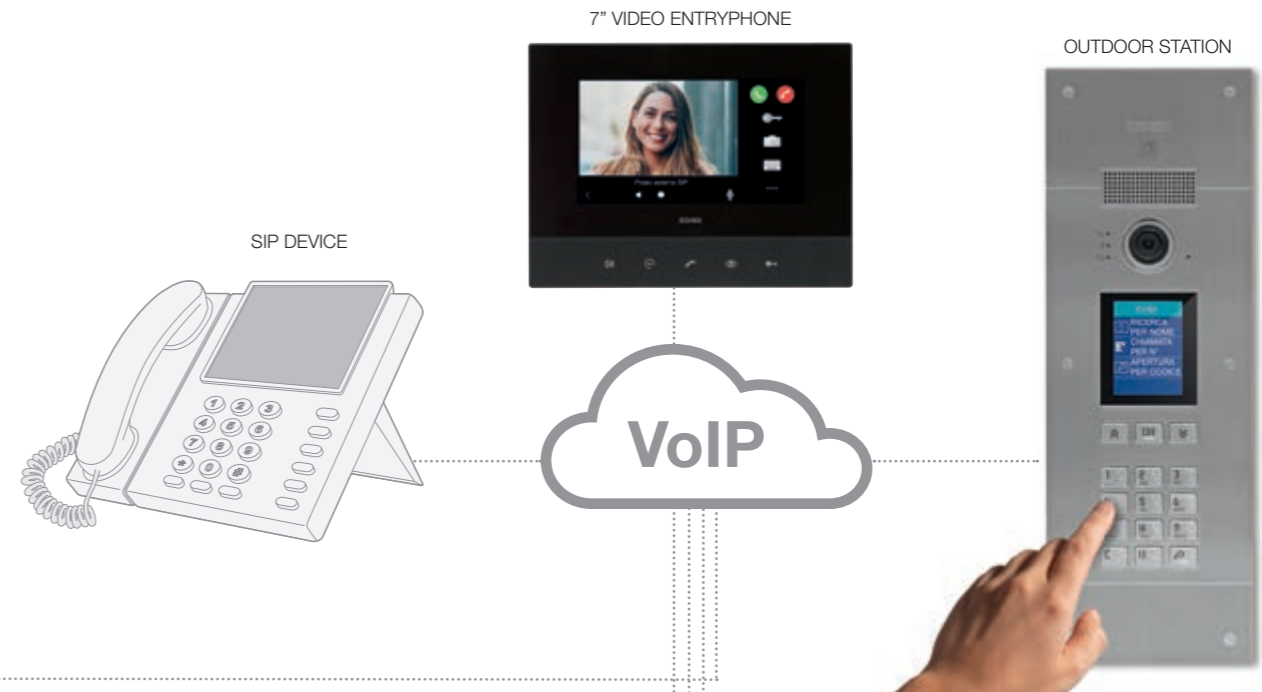






# SIP technology, Session Initiation Protocol, for a multimedia communication.

**SIP (Session Initiation Protocol) is the most commonly used protocol in the VoIP telephony business market.** It is used to create audio or audio-video communication sessions between one or more participants. These sessions include Internet phone calls (VoIP).



## PERFORMANCES

### Compatibility.

The range is compatible with the products of world leaders in the VoIP telephony sector.

### Installation context.

Provide solutions in contexts where a SIP server is installed

### Simple configuration.

The operating can be performed by a common browser, by connecting to the IP address of the device, without the need for specific software.

### Call context.

Calls can be made audio-only or audio / video towards SIP devices, with or without preview function (depends on the characteristics of the device), to see who is calling, before answering. From the SIP devices it is possible to activate the outputs of the entrance panels (door lock and auxiliary services), using DTMF (Dual-Tone Multi-Frequency) codes.



### Software licences.

The various licenses differ in enabling the calls of entrance panels towards one or more audio or audio / video SIP devices. The licences are supplied with USB keys, by web, mail or into MyVimar website user area.

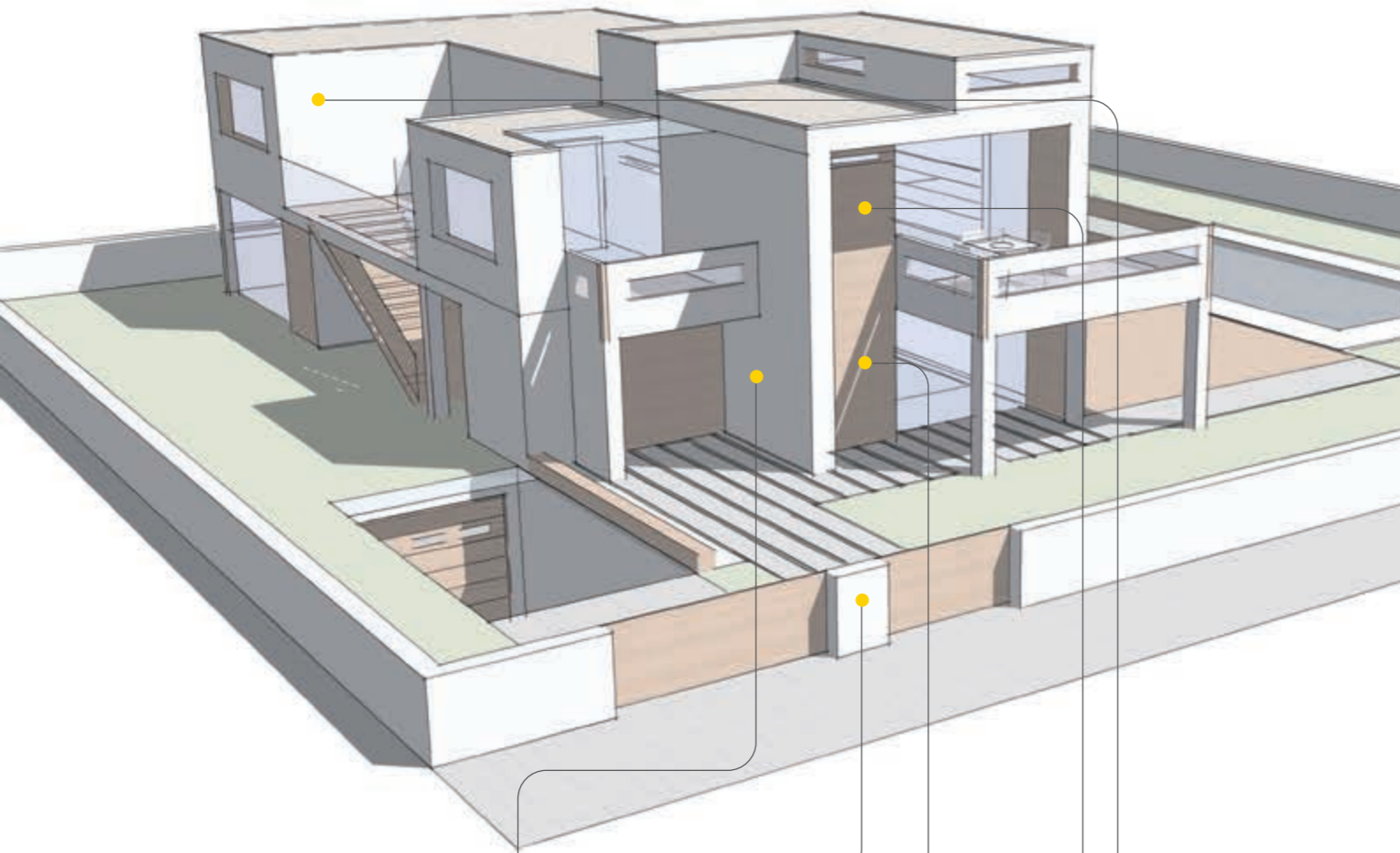
# Index

---

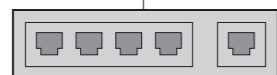
## Elvox Door entry

Installations examples and quick guide to the right system solution	18
IP technology 	36
SIP technology 	42

Villa with wired video entryphones.



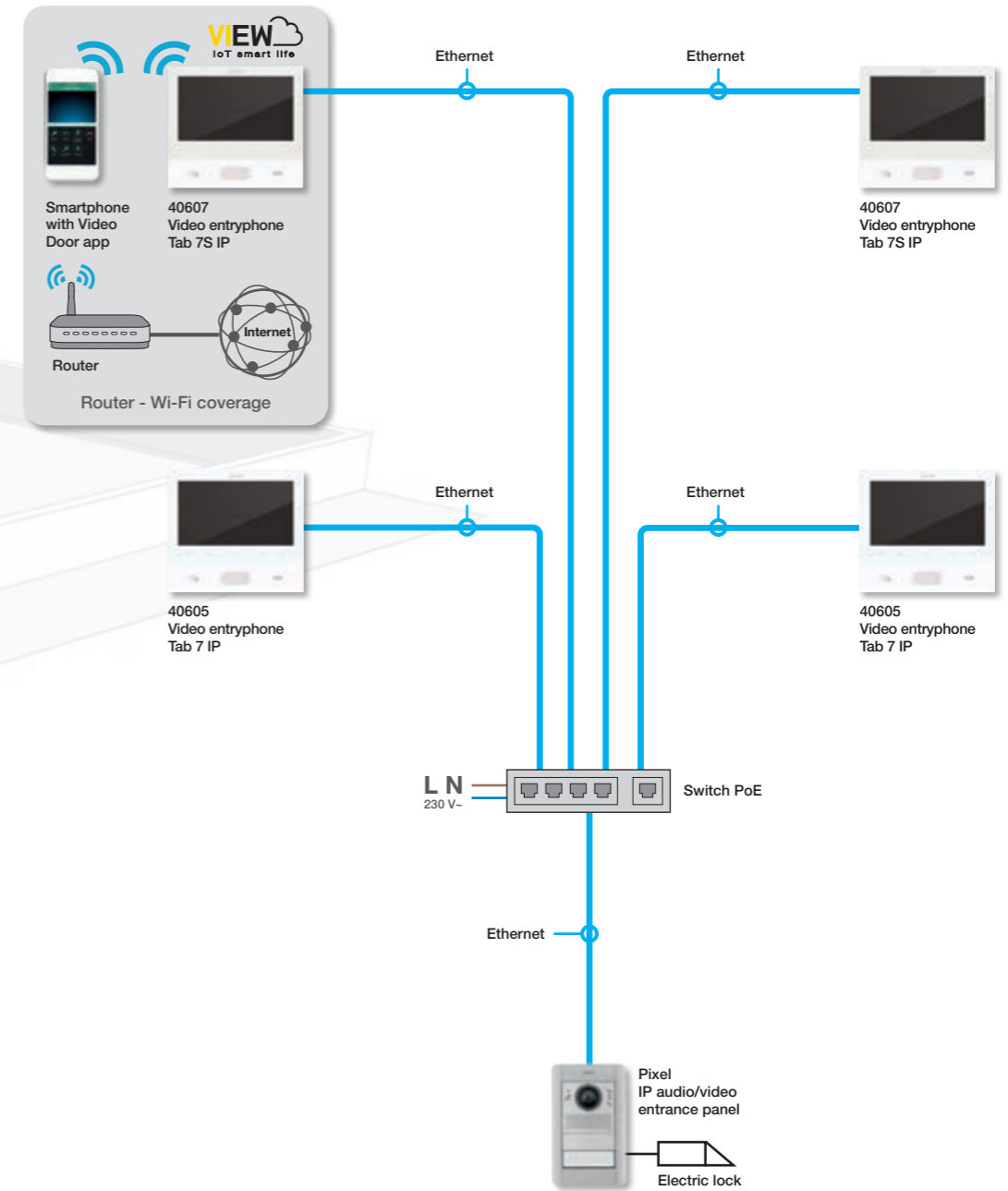
Pixel entrance panel



PoE switch



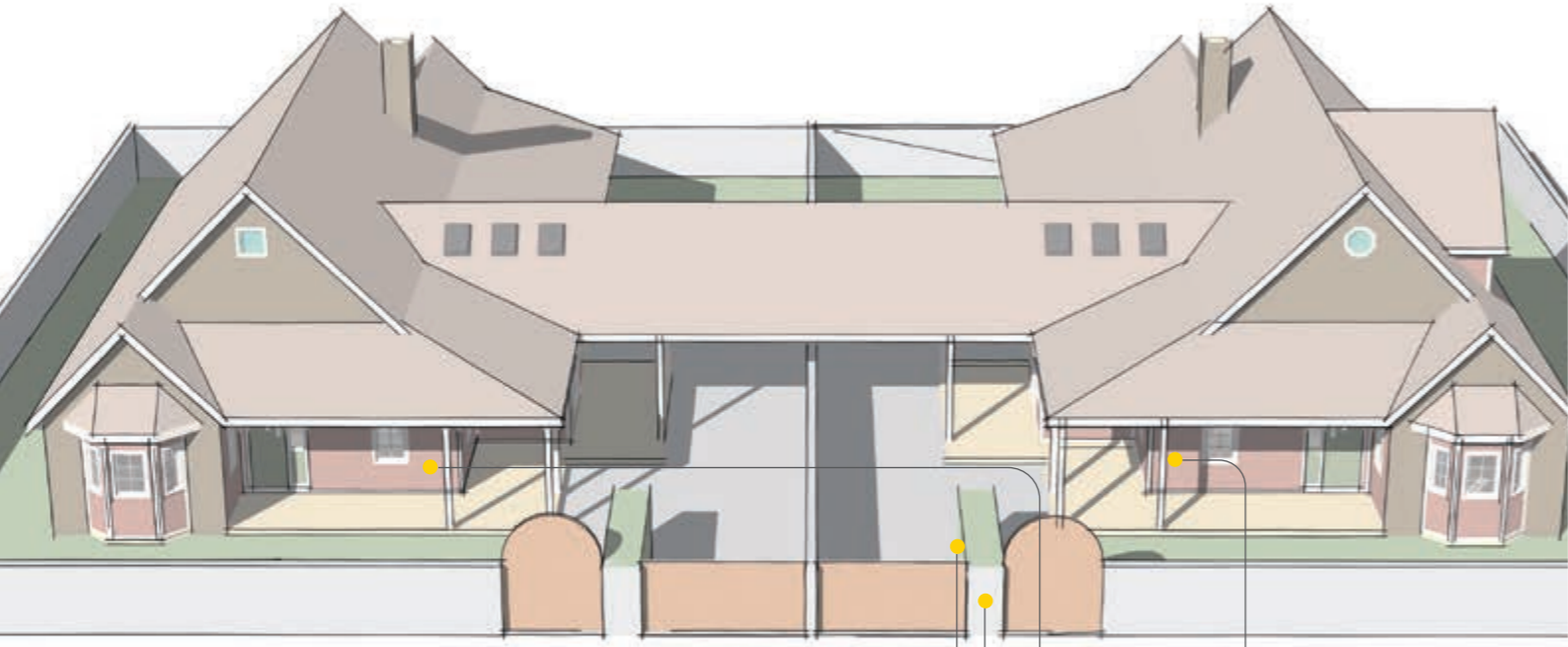
Video entryphone  
Tab 7S and Tab 7



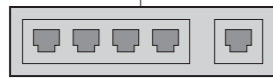
**Note:** example of standard installation on dedicated video door entry system LAN network. The passive structured cabling and active components may vary depending on the type of network defined for each specific application.



Semi-detached villa with wired video entryphones.



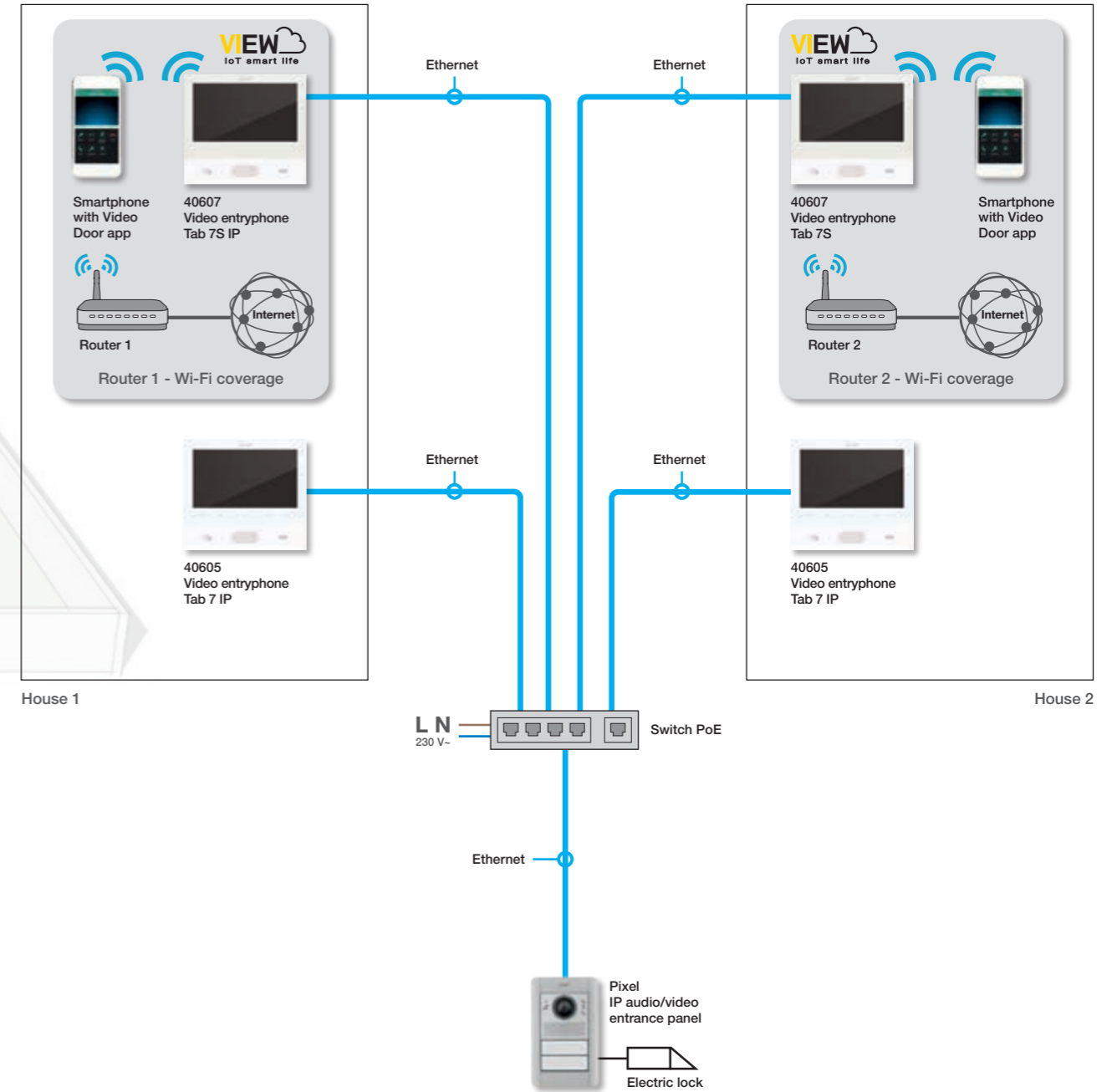
Pixel entrance panel



Switch PoE



Video entryphone Tab 7S

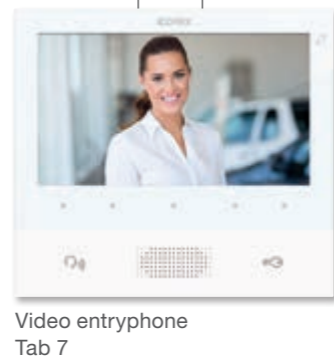
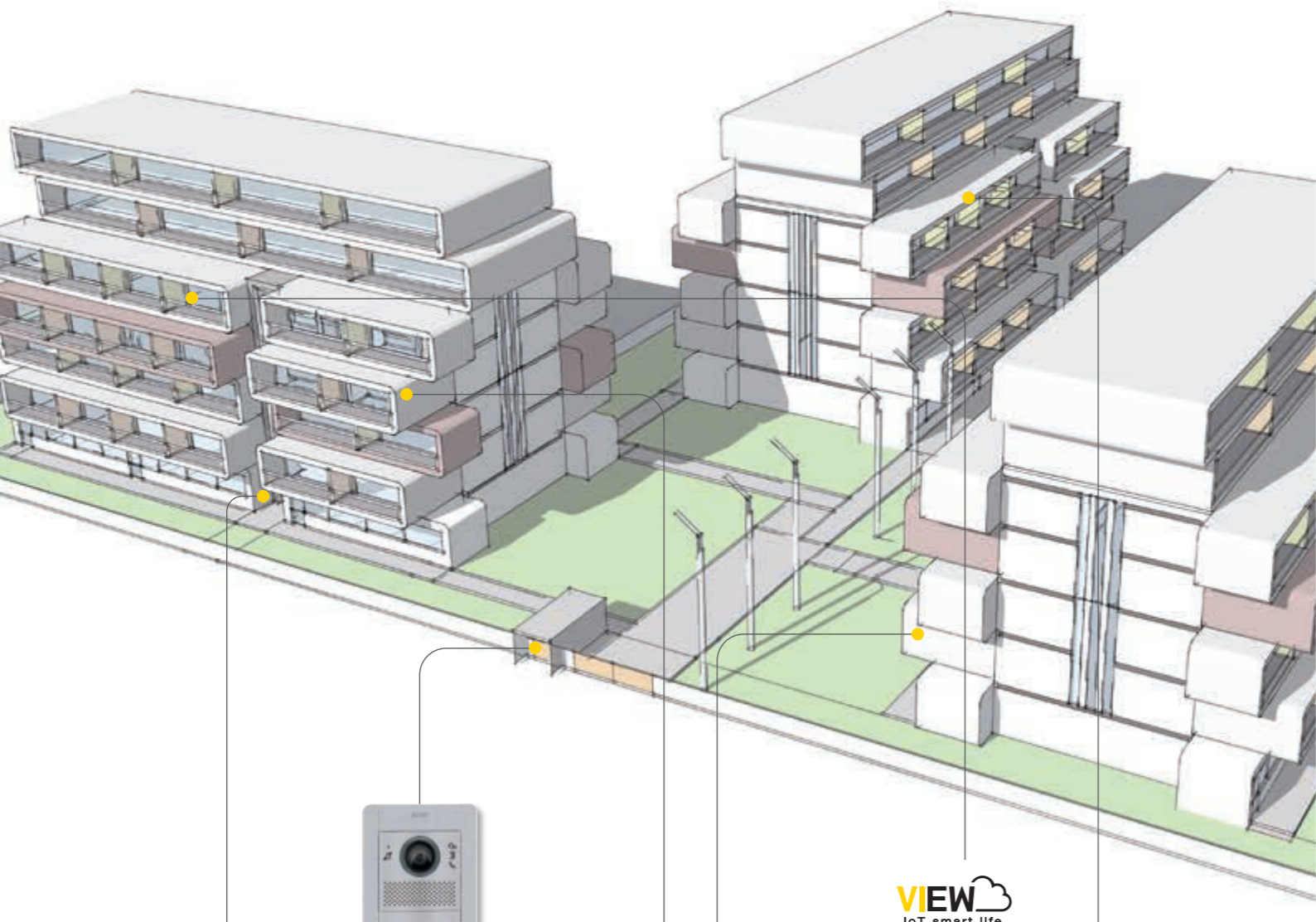


**Note:** example of standard installation on dedicated video door entry system LAN network. The passive structured cabling and active components may vary depending on the type of network defined for each specific application.

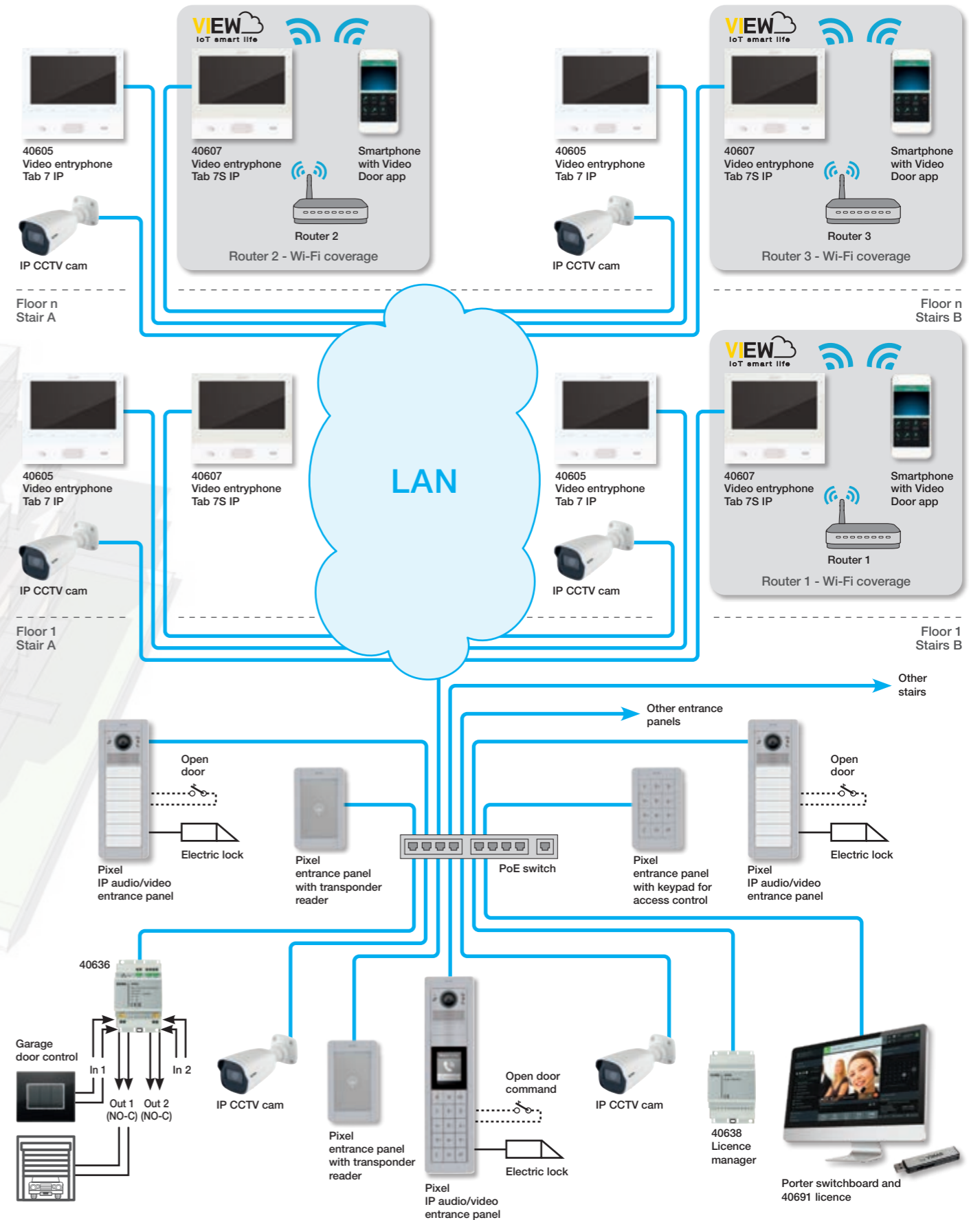
IP - Installations examples



Residential complex with video door entry system with up to 200 devices and wired video entryphones.

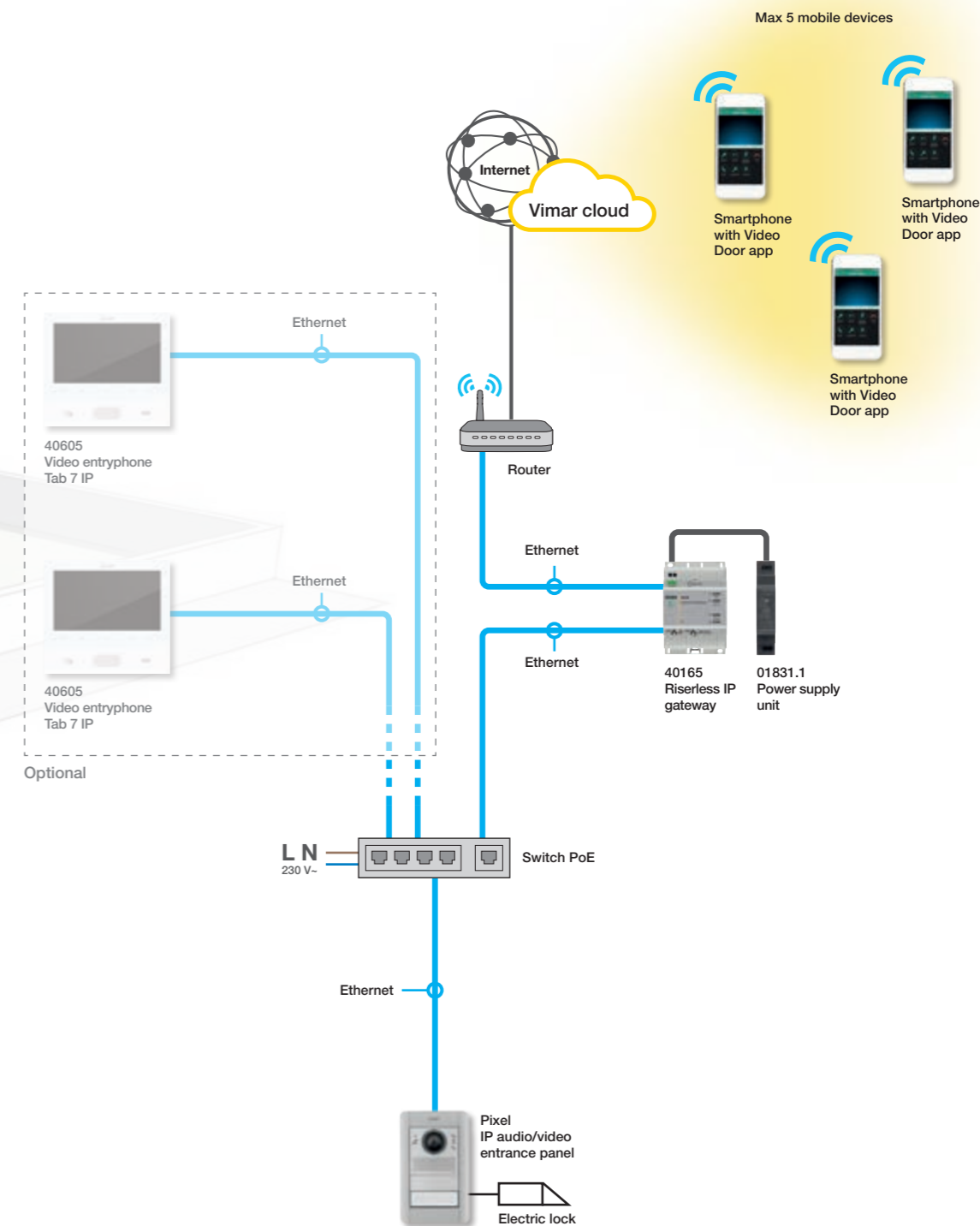
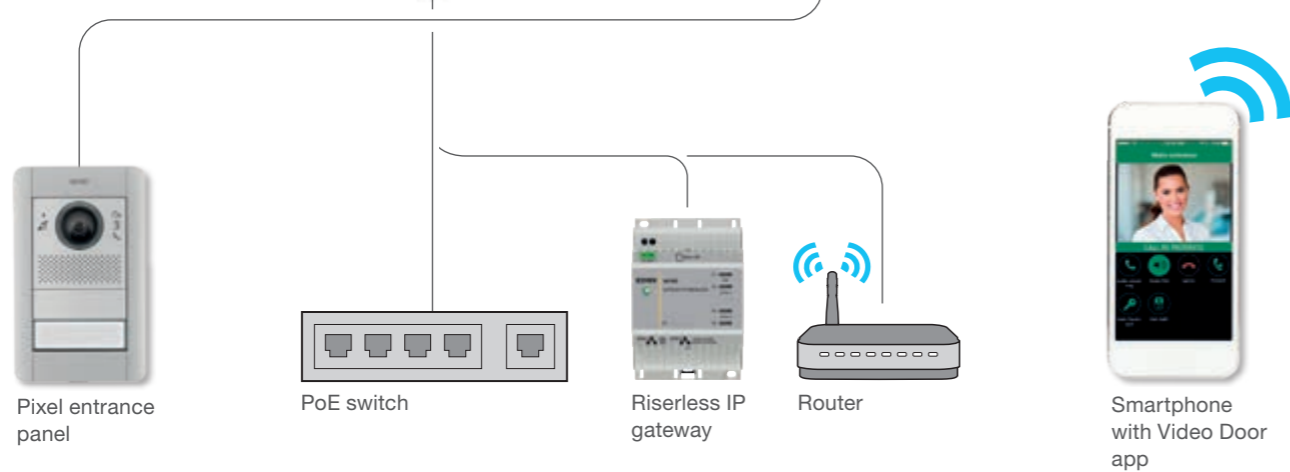
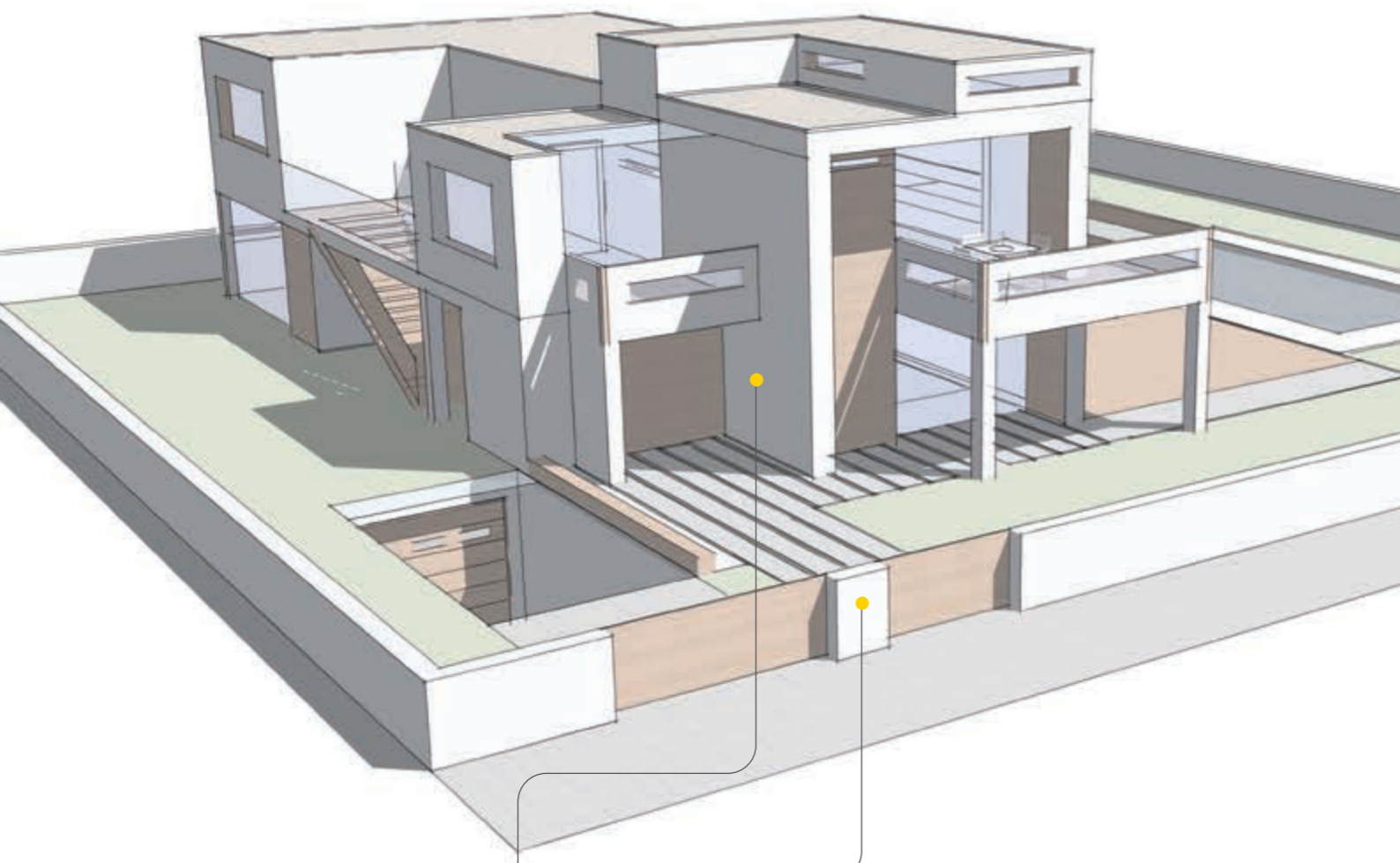


IP - Installations examples

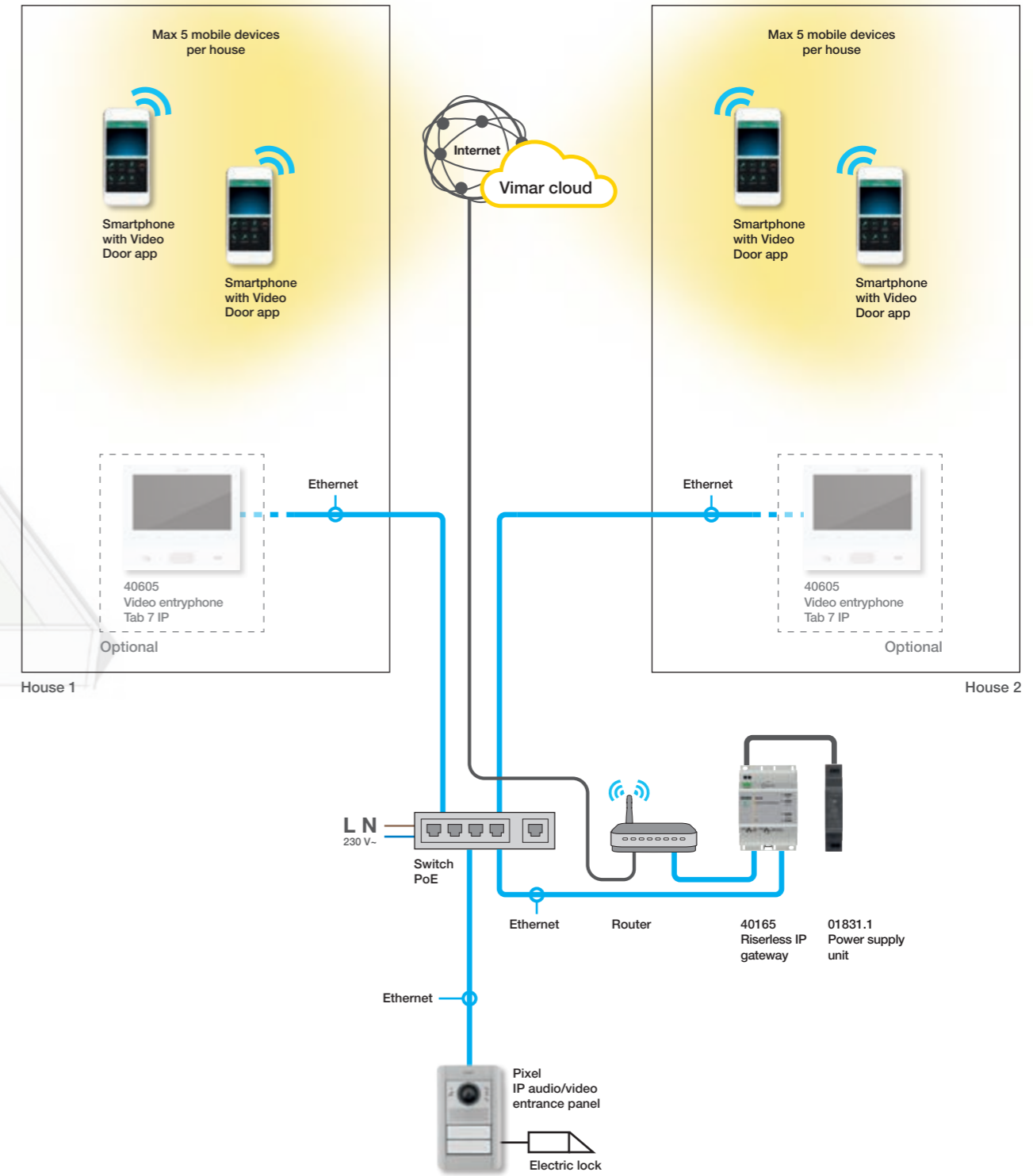
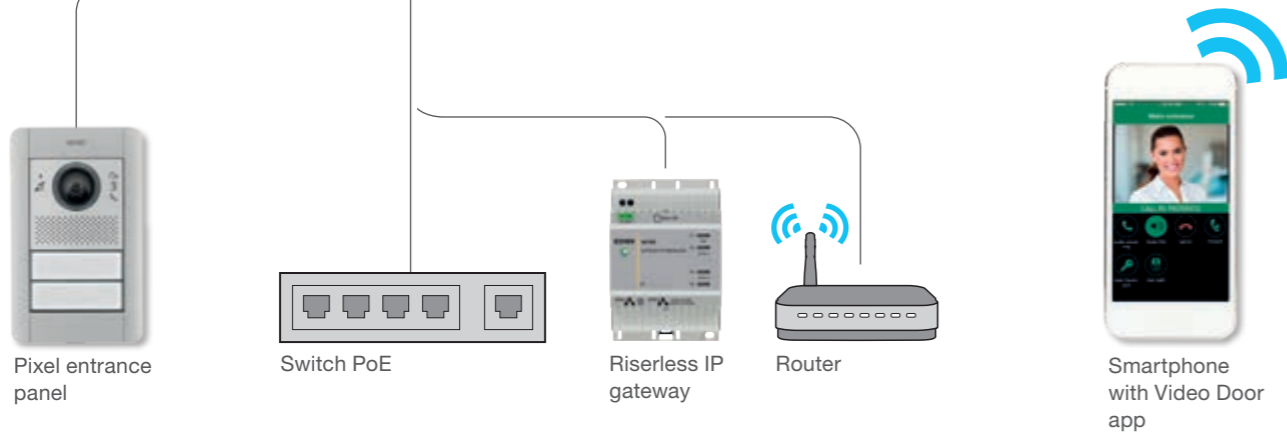
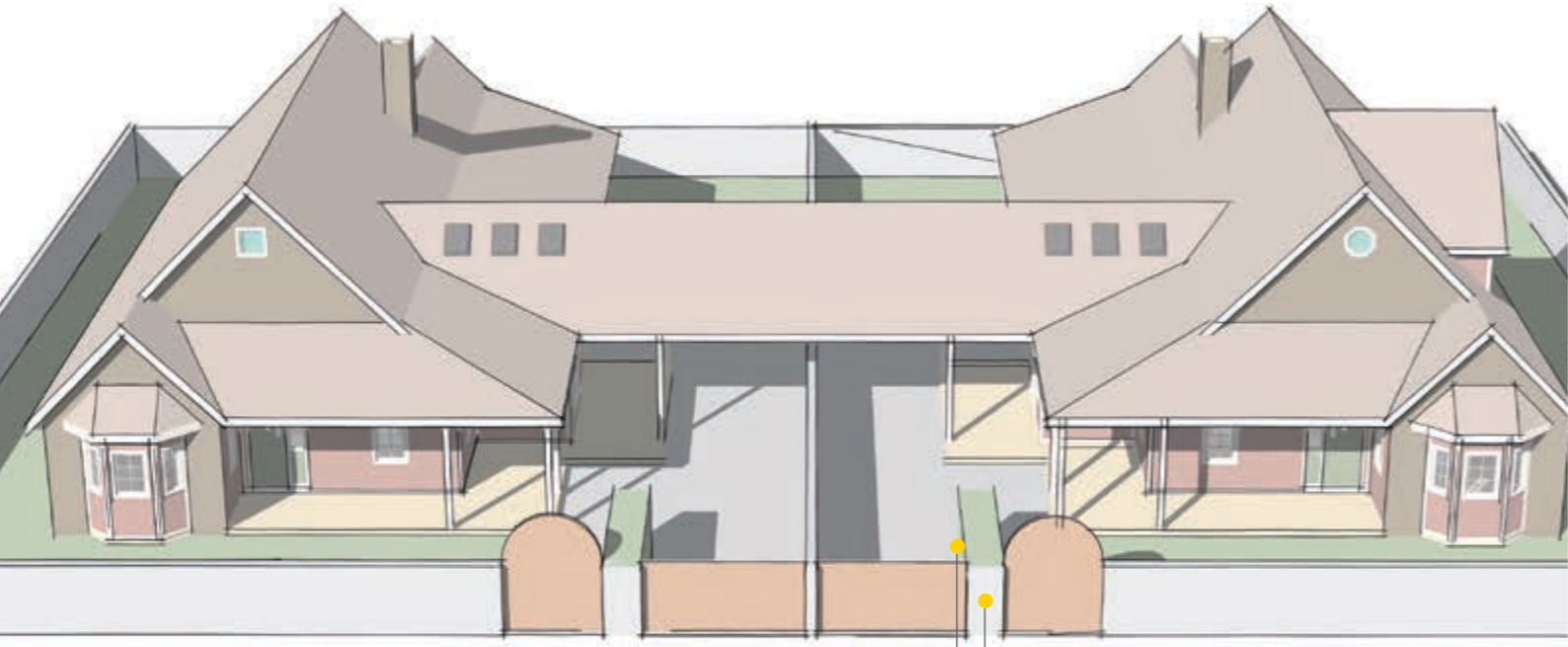


**Note:** example of standard installation on dedicated video door entry system LAN network. The passive structured cabling and active components may vary depending on the type of network defined for each specific application.

Villa with call service via Cloud.



**Note:** example of standard installation on dedicated video door entry system LAN network. The passive structured cabling and active components may vary depending on the type of network defined for each specific application.

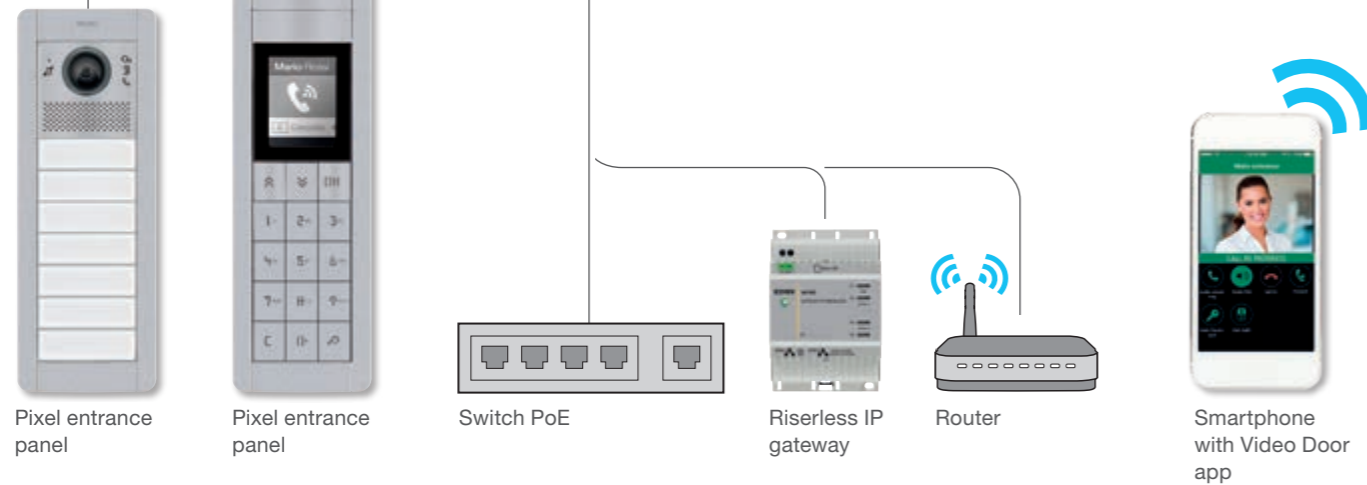
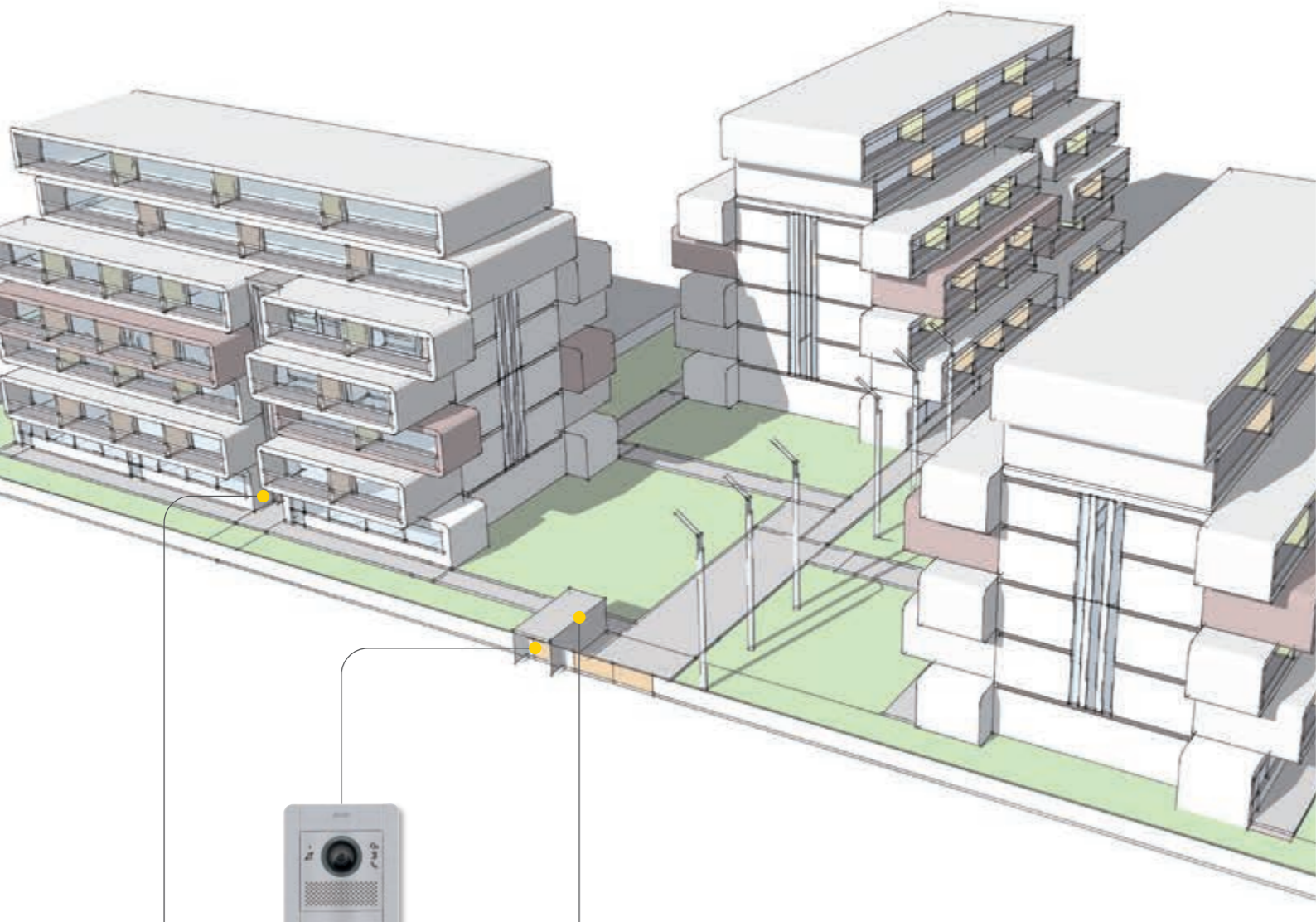


**Note:** example of standard installation on dedicated video door entry system LAN network. The passive structured cabling and active components may vary depending on the type of network defined for each specific application.

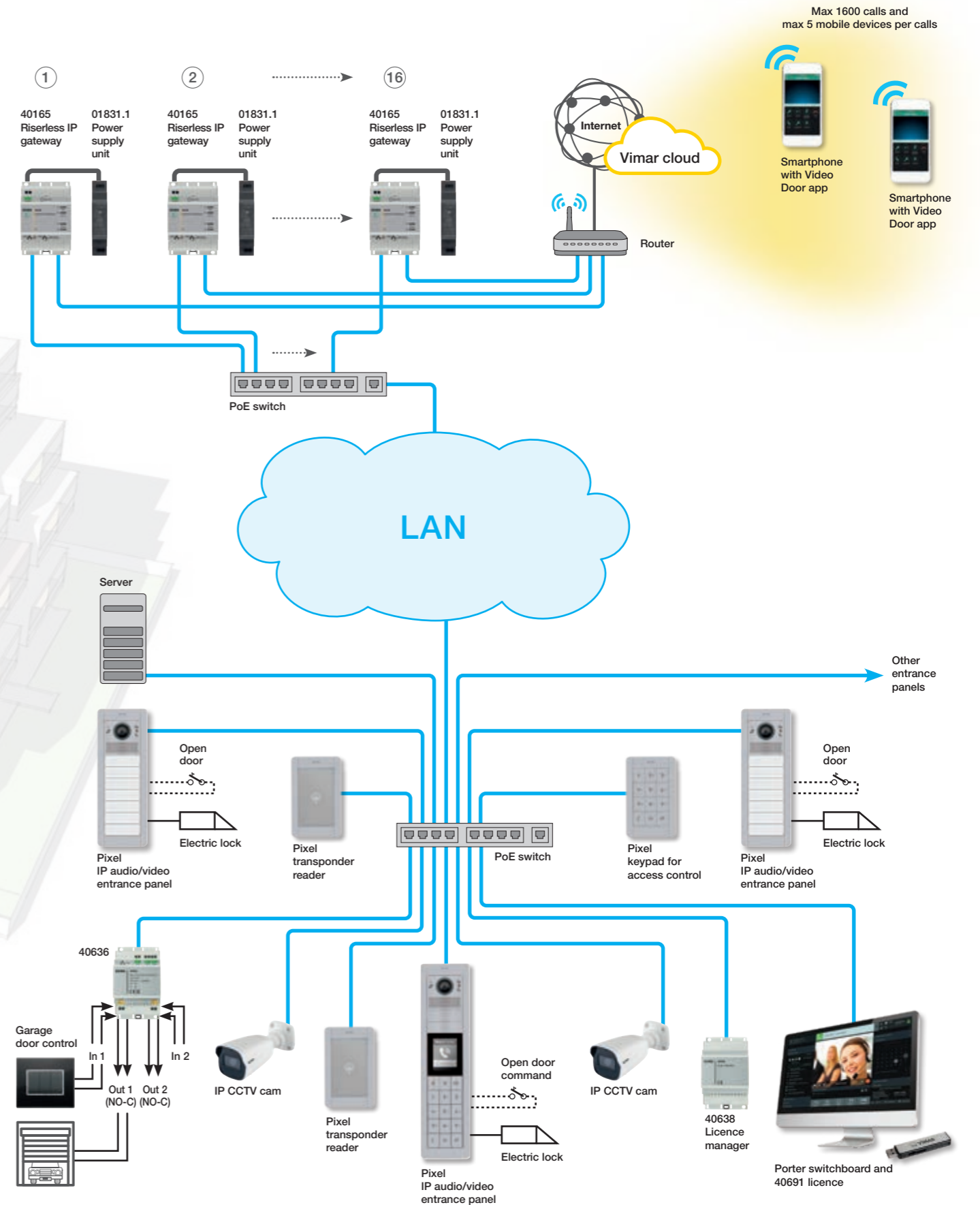
Riserless IP - Installations examples



Residential complex with video door entry system with more than 200 devices and call service via Cloud.



Riserless IP - Installations examples

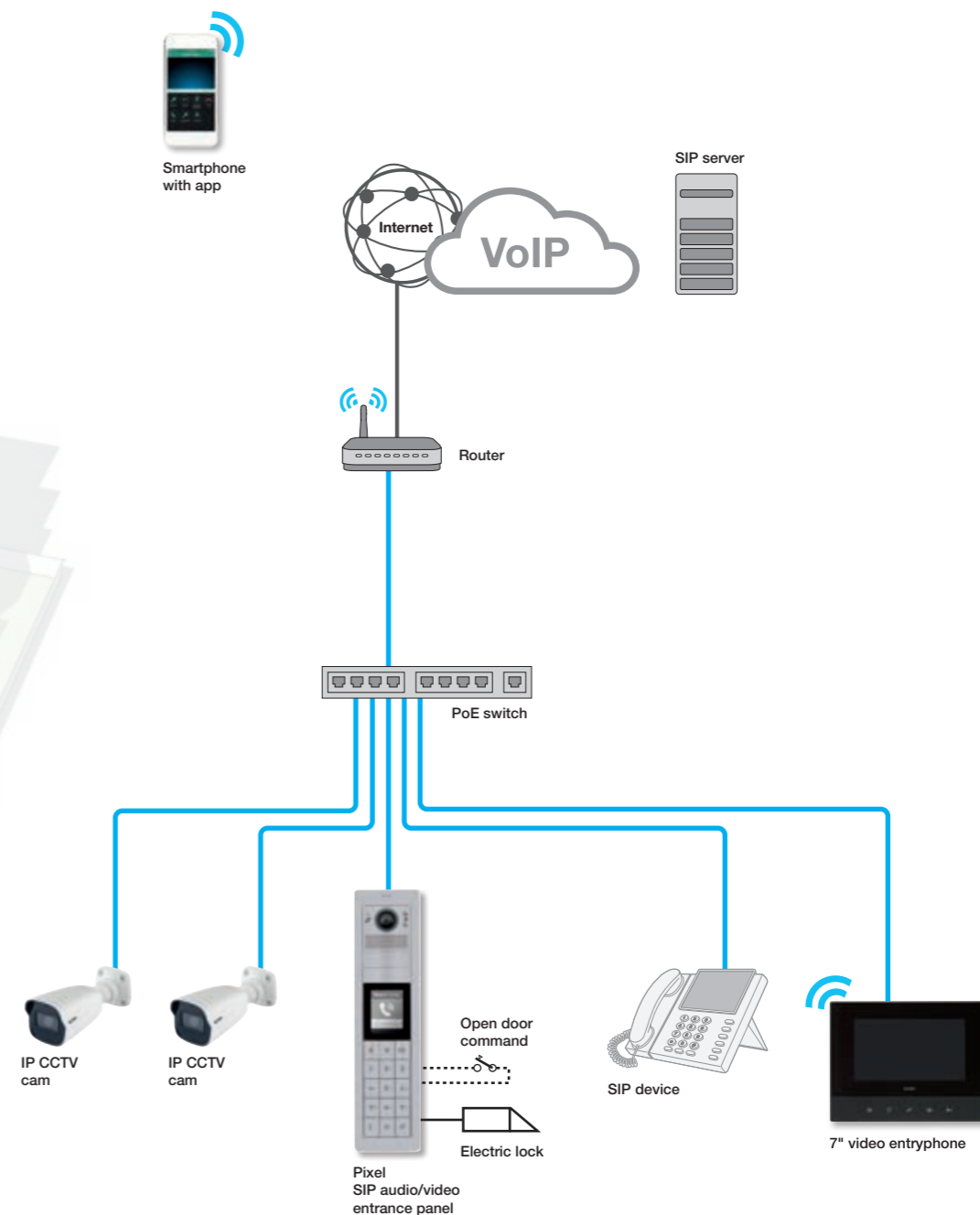


**Note:** example of standard installation on dedicated video door entry system LAN network. The passive structured cabling and active components may vary depending on the type of network defined for each specific application.





Tertiary complex with video door entry system and via Internet (VoIP) call service.



**Note:** example of standard installation on dedicated video door entry system LAN network. The passive structured cabling and active components may vary depending on the type of network defined for each specific application.

## Quick guide to the right system solution

### Elvox IP video door entry system with wired inner units

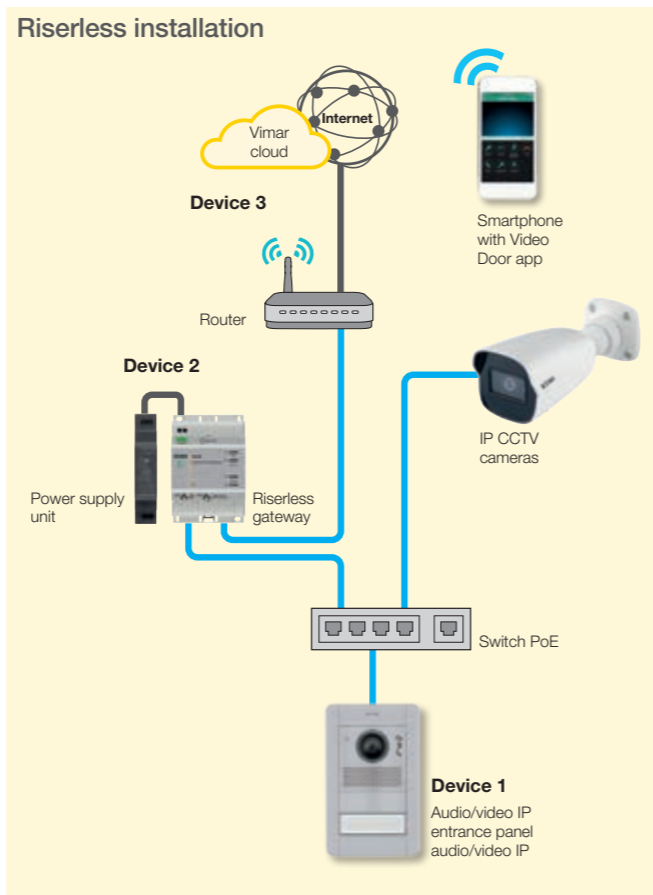
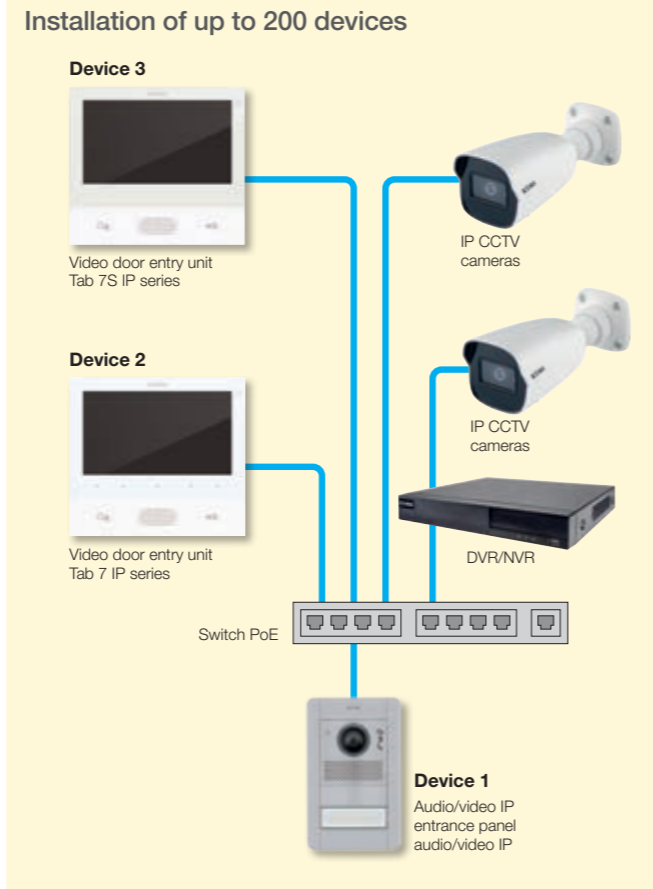
- The system guarantees the functions described using the articles in the catalogue for all the following cases, also in combination:
- installation with less than 200 connected devices, i.e. objects connected to the same LAN network via an RJ45 interface, do not calculate IP CCTV cameras and switch;
  - installation with up to maximum 3 video reception switchboards;
  - management of access control services with standard articles from the catalogue up to 500 users;
  - management of up to a maximum 10 video answering machine messages for each reception switchboard installed.
  - Video stream from NVR and IP CCTV cams.

For all other cases and for the integration of third party products/systems, such as VoIP devices with SIP protocol, IP CCTV systems, advanced access control systems, please contact the sales network to consider customized solutions agreed with the system managers. The IP CCTV cameras can not be installed with the entrance panel to operate as call function service.

### Elvox IP riserless video door entry system with call service via Cloud

- The system guarantees the functions described using the articles in the catalogue for all the following cases, also in combination:
- installation with less than 200 connected devices, i.e. objects connected to the same LAN network via an RJ45 interface, do not calculate IP CCTV cameras and switch;
  - installation with network server for more than 200 devices connected to LAN network.
- The files are available and free for download on [www.vimar.com](http://www.vimar.com);
- installation with maximum 16 riserless IP gateways for IP video door entry system to Vimar Cloud connection; each riserless IP gateway manages up to 100 calls and for each call it is matchable up to 5 mobile with Video Door app, which answer to the same call simultaneously
  - calls towards the mobile devices are possible with the licenses installation and the authorization by the plant manager;
  - installation can be managed from porter video switchboard;
  - management of access control services with standard articles from the catalogue up to 1600 users;
  - management of up to a maximum 10 video answering machine messages for each reception switchboard installed.

For all other cases and for the integration of third party products/systems, such as VoIP devices with SIP protocol, IP CCTV systems, advanced access control systems, please contact the sales network to consider customized solutions agreed with the system managers.



## Quick guide to the right system solution

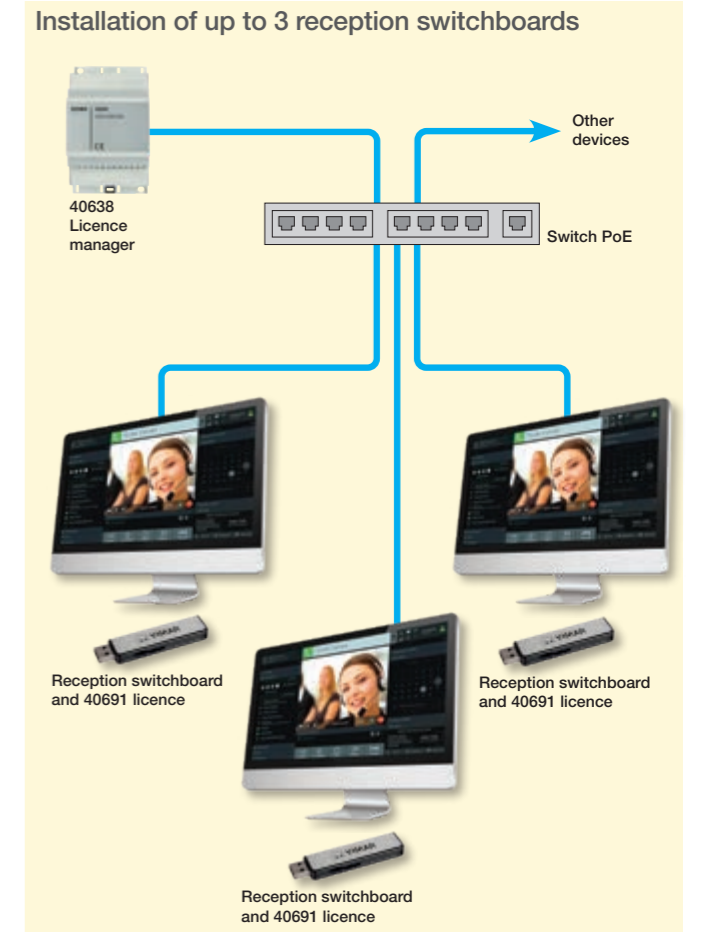
### Switch for the Elvox IP video door entry system

The Elvox IP video door entry system should be completed with switch that manages the traffic of the LAN network. For a correct system operating, it is recommended the use of switch conform to the network characteristics of the current catalogue.

### Installation of the passive network

To realize the infrastructure of passive network for the IP video door entry system, it is recommended to install the Vimar Netsafe structured cabling system with a wide range of products able to realize networks in 5e, 6 and 6A categories, shielded or unshielded in copper or fiber optic connections. A system with great performances, offering versatile solutions for wide-ranging installations and assuring steady connections over time and for every kind of buildings, from the smallest in residential sector to the biggest to the tertiary sector. For more information browse on the site [www.vimar.com](http://www.vimar.com).

Network technical data	
Power supply from Ethernet network	PoE, class 0 (IEEE 802.3-2012)
Network interface	RJ45 Ethernet 10/100 Mps (certified)

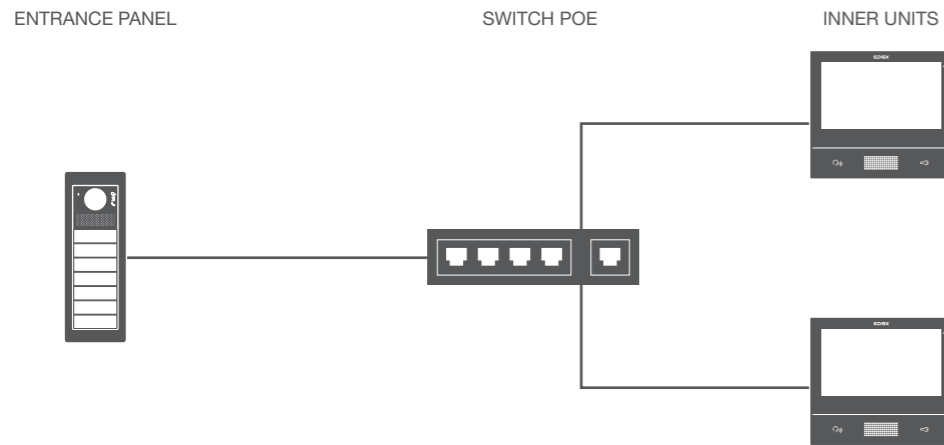




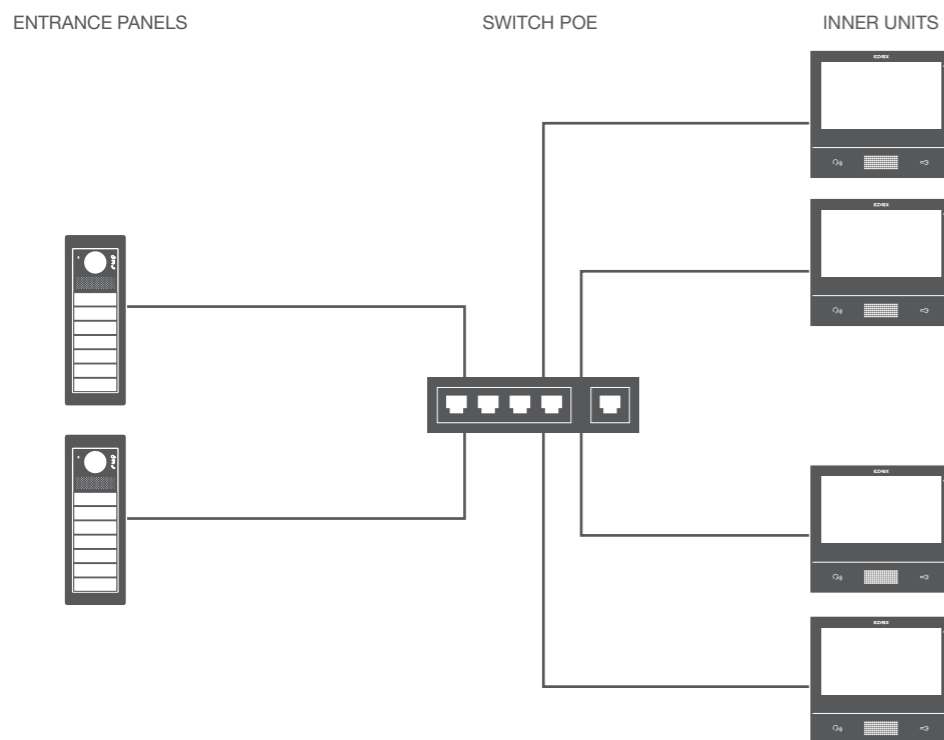
**IP video door entry system with wired inner units.**

- Main devices:
- Entrance panels (external stations)
  - PoE switch
  - Video entryphones (inner units)

**With one entrance panel.**



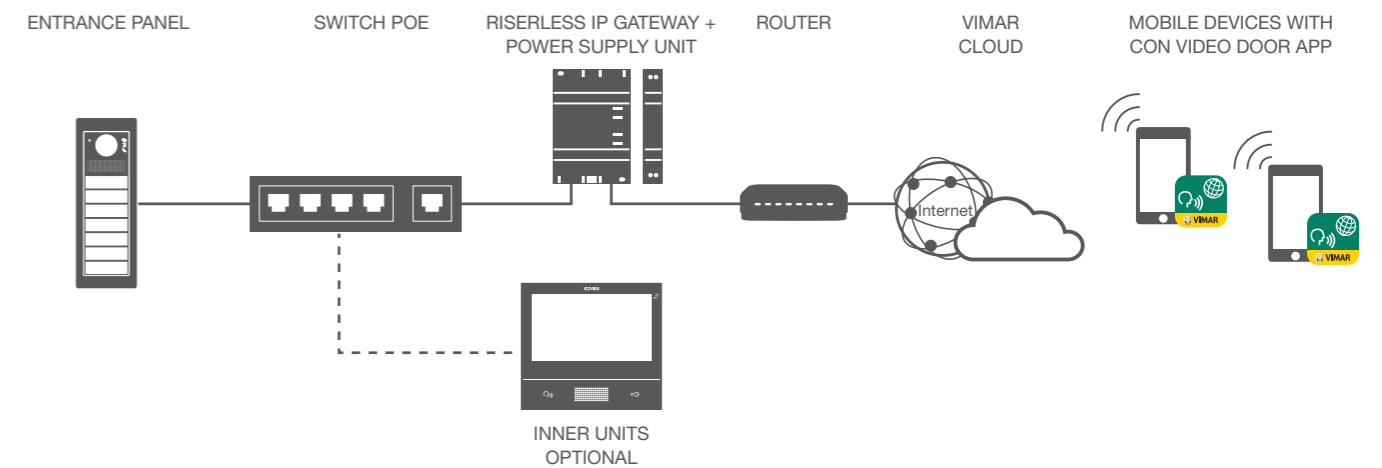
**With many entrance panels.**



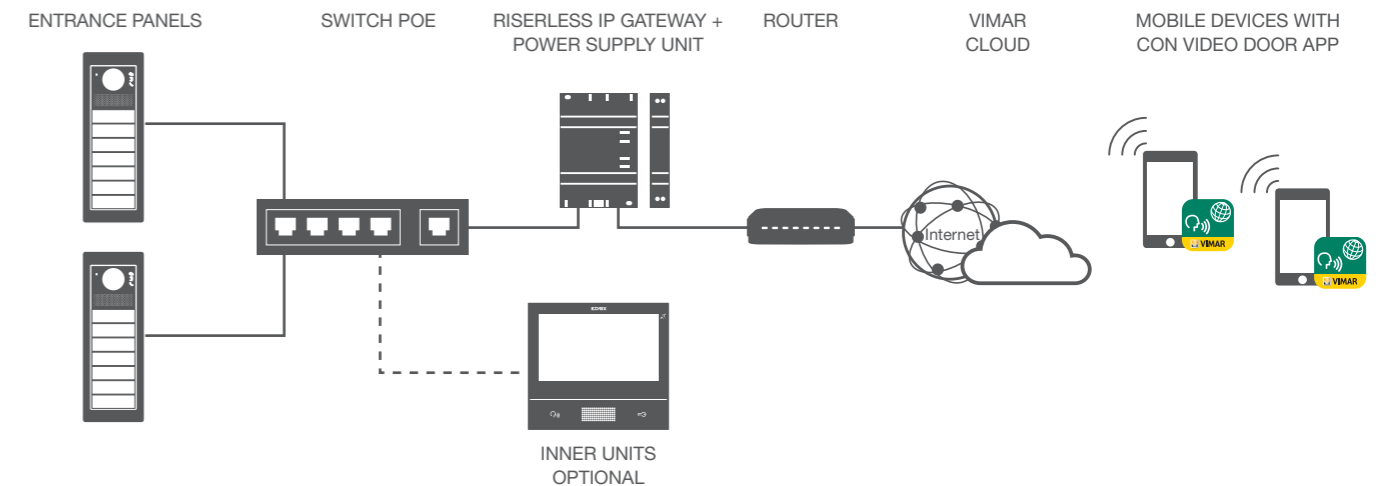
**Riserless video system with call service via Cloud.**

- Main devices:
- Entrance panels (external stations)
  - PoE switch
  - Riserless IP gateway with power supply unit
  - Router

**With one entrance panel.**



**With many entrance panels.**



IP - 1-family video entry system kits



**K40607.01**  
Self-configuring kit, comprises:  
- 1 1-module 1-button Pixel series entrance panel, grey (41131.01+41105.01);  
- 1 audio/video colour wide-angle electronic unit (41006.1);  
- 1 flush mounting box (9191);  
- 1 Tab 7S IP hands-free video entryphone white, with integrated Wi-Fi for the remote control of the call on smartphone (40607)

Pixel and Pixel Heavy series: video entrance panels

Audio/video and expansion electronic units and accessories



**41006.1**  
IP audio/video unit with teleloop, wide-angle cam and full duplex audio

**41010**  
10 buttons in 2 rows

**41018**  
3,5" display and 3 buttons

**41019**  
Alphanumerical keypad

**41015**  
Name-plate

**41017**  
Transponder reader

**41020**  
Keypad for access control



**41190**  
Cable for vertical and/or horizontal wiring of modules with integrated IP protection, length 485 mm

**41191**  
Cable for internal connection of modules with integrated IP protection, length 245 mm

Pixel and Pixel Heavy series: video entrance panels

Pixel - Front modules



**41105.01**  
Audio/Video teleloop for 41006.1 unit, grey

**41118.01**  
Display for 41018 unit, grey

**41119.01**  
Keypad for 41019 and 41020 units, grey

**41121.01**  
Blank module, grey

**41115**  
Name-plate for 41015 unit

**41117**  
Transponder reader with interchangeable labels in grey, slate grey and white

**41105.02**  
As above, slate grey

**41118.02**  
As above, slate grey

**41119.02**  
As above, slate grey

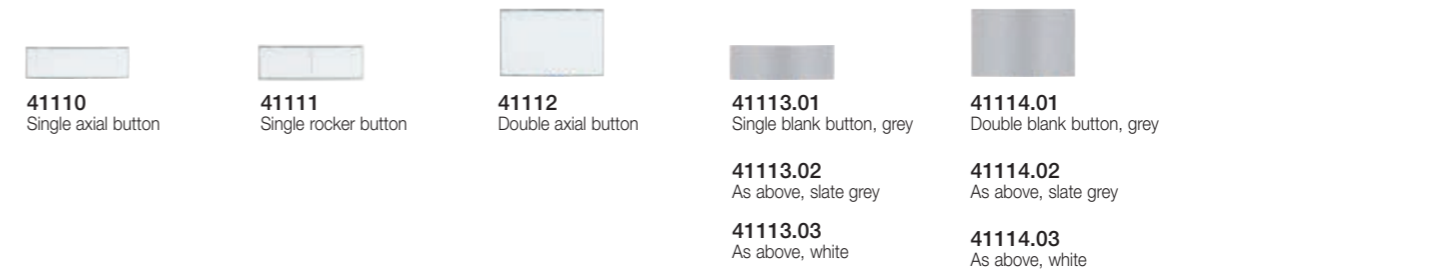
**41121.02**  
As above, slate grey

**41105.03**  
As above, white

**41118.03**  
As above, white

**41119.03**  
As above, white

**41121.03**  
As above, white



Pixel - Cover plates with frames

Pixel - Cover plates with frames



**41131.01**  
1-module, grey

**41131.02**  
1-module, slate grey

**41131.03**  
1-module, white

**41131.04**  
1-module, anodized grey

**41132.01**  
2-module, grey

**41132.02**  
2-module, slate grey

**41132.03**  
2-module, white

**41132.04**  
2-module, anodized grey

**41133.01**  
3-module, grey

**41133.02**  
3-module, slate grey

**41133.03**  
3-module, white

**41133.04**  
3-module, anodized grey

Pixel - Mounting boxes



**9191**  
1 module

**9192**  
2 modules

**9193**  
3 modules

\* App available for iOS and Android operating system, free download from Apple Store and da Google Play.

Pixel and Pixel Heavy series: video entrance panels

Pixel - Rainproof cover



- 1 module  
41141.01 grey  
41141.02 slate grey  
41141.03 white  
41141.04 anodized grey
- 2 modules  
41142.01 grey  
41142.02 slate grey  
41142.03 white  
41142.04 anodized grey
- 3 modules  
41143.01 grey  
41143.02 slate grey  
41143.03 white  
41143.04 anodized grey
- 4 (2x2) modules  
41144.01 grey  
41144.02 slate grey  
41144.03 white  
41144.04 anodized grey
- 6 (2x3) modules  
41146.01 grey  
41146.02 slate grey  
41146.03 white  
41146.04 anodized grey
- 6 (3x2) modules  
41147.01 grey  
41147.02 slate grey  
41147.03 white  
41147.04 anodized grey
- 9 (3x3) modules  
41149.01 grey  
41149.02 slate grey  
41149.03 white  
41149.04 anodized grey

Pixel - Surface mounting boxes with built-in rainproof cover



- 1 module  
41151.01 grey  
41151.02 slate grey  
41151.03 white  
41151.04 anodized grey
- 2 modules  
41152.01 grey  
41152.02 slate grey  
41152.03 white  
41152.04 anodized grey
- 3 modules  
41153.01 grey  
41153.02 slate grey  
41153.03 white  
41153.04 anodized grey
- 4 (2x2) modules  
41154.01 grey  
41154.02 slate grey  
41154.03 white  
41154.04 anodized grey
- 6 (2x3) modules  
41156.01 grey  
41156.02 slate grey  
41156.03 white  
41156.04 anodized grey
- 6 (3x2) modules  
41157.01 grey  
41157.02 slate grey  
41157.03 white  
41157.04 anodized grey
- 9 (3x3) modules  
41159.01 grey  
41159.02 slate grey  
41159.03 white  
41159.04 anodized grey

Pixel and Pixel Heavy series: video entrance panels

Pixel Heavy - Front modules (IK09, IK10 and IP54)



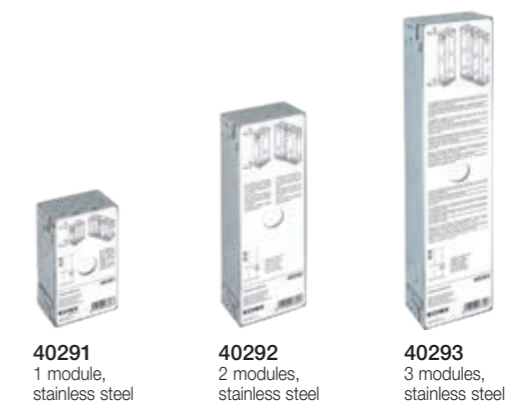
- 41270**  
Audio/video for 41006.1 unit, no buttons, with teleloop, IK10 and IP54 protection
- 41271**  
Audio/Video for 41006.1 unit, 1-button, with teleloop, IK10 and IP54 protection
- 41272**  
Audio/Video for 41006.1 unit, 2-button, with teleloop, IK10 and IP54 protection
- 41274**  
Audio/Video for 41006.1 unit, 4-button in 2 rows, with teleloop, IK10 and IP54 protection
- 41223**  
For 41010 unit, 3-button, IK10 and IP54 protection
- 41225**  
For 41010 unit, 5-button, IK10 and IP54 protection
- 41230**  
For 41010 unit, 10-button in 2 rows, IK10 and IP54 protection
- 41218**  
Display for 41018 unit, IK09 and IP54 protection
- 41219**  
Keypad for 41019 and 41020 unit, IK09 and IP54 protection
- 41215**  
Name-plate for 41015 unit, IK10 and IP54 protection
- 41221**  
Blank module, IK10 and IP54 protection

Pixel Heavy - Cover plates with frames



- 41231**  
1 module
- 41232**  
2 modules
- 41233**  
3 modules

Pixel Heavy - Tearproof mounting boxes



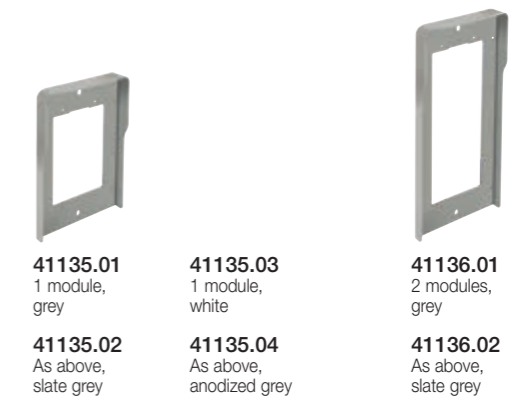
- 40291**  
1 module, stainless steel
- 40292**  
2 modules, stainless steel
- 40293**  
3 modules, stainless steel

Pixel Heavy - Surface mounting boxes



- ▲ **41251**  
With built-in rainproof cover  
1 module
- ▲ **41252**  
With built-in rainproof cover  
2 modules
- ▲ **41253**  
With built-in rainproof cover  
3 modules

Pixel e Pixel Heavy - Universal adaptors



- 41135.01**  
1 module, grey
- 41135.02**  
As above, slate grey
- 41135.03**  
1 module, white
- 41135.04**  
As above, anodized grey
- 41136.01**  
2 modules, grey
- 41136.02**  
As above, slate grey
- 41136.03**  
2 modules, white
- 41136.04**  
As above, anodized grey

Pixel Up series: video entrance panels

Video entrance panels with audio/video electronic unit and accessories



**40414**  
Audio/video with 4x4 reader hole, stainless steel



▲ **40414.05**  
Audio/video with 4x4 reader hole, black metal



▲ **40414.06**  
Audio/video with 4x4 reader hole, champagne



▲ **40414.07**  
Audio/video with 4x4 reader hole, copper



▲ **40414.08**  
Audio/video with 4x4 reader hole, black painted



**41022**  
Lettore RFID, per foro 40x40 mm



**40415**  
Audio/Video, stainless steel



▲ **40415.05**  
Audio/Video, black metal



▲ **40415.06**  
Audio/Video, champagne



▲ **40415.07**  
Audio/Video, copper



▲ **40415.08**  
Audio/Video, black painted



**40441**  
Surface mounting box with rain-proof frame for 40414, stainless steel



▲ **40441.05**  
Surface mounting box with rain-proof frame for 40414, black metal



▲ **40441.06**  
Surface mounting box with rain-proof frame for 40414, champagne



▲ **40441.07**  
Surface mounting box with rain-proof frame for 40414, copper



▲ **40441.08**  
Surface mounting box with rain-proof frame for 40414, black painted



**40440**  
Surface mounting box with rain-proof frame for 40415, stainless steel



▲ **40440.05**  
Surface mounting box with rain-proof frame for 40415, black metal



▲ **40440.06**  
Surface mounting box with rain-proof frame for 40415, champagne



▲ **40440.07**  
Surface mounting box with rain-proof frame for 40415, copper



▲ **40440.08**  
Surface mounting box with rain-proof frame for 40415, black painted



**40430**  
Flush mounting box for 40415

Tab series: video entryphones

Video entryphones and accessories



**40607**  
Tab 7S IP, hands-free, integrated Wi-Fi, 7" LCD monitor, teleloop facility for hearing aids, white



**40605**  
Tab 7 IP, hands-free, 7" LCD monitor, teleloop facility for hearing aids, white



**40195**  
Desktop for Tab 7

Additional devices

Devices for DIN (60715 TH35) rail installation and software license



**40638**  
Device for the enabling optional services after activation of a license



**40691**  
USB storage device for license activation for 1 IP porter switchboard station



▲ **40691.1W**  
USB storage device for license activation for 1 Web IP porter switchboard station



**40636**  
2-input/output device, IP standard



**40165**  
Riserless IP gateway

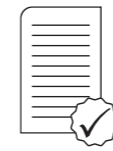


**40692**  
1 IP riserless license

**40692.10**  
As above, 10 licenses

**40692.50**  
As above, 50 licenses

**40692.100**  
As above, 100 licenses



▲ **40692.1W**  
1 Web IP riserless license

▲ **40692.10W**  
As above, 10 licenses

▲ **40692.50W**  
As above, 50 licenses

▲ **40692.100W**  
As above, 100 licenses

Pixel and Pixel Heavy series: video entrance panels

Audio/video and expansion electronic units and accessories



**41007** SIP audio/video unit with teleloop, wide-angle cam and full duplex audio  
**41010** 10 buttons in 2 rows  
**41018** 3,5" display and 3 buttons  
**41019** Alphanumerical keypad  
**41015** Name-plate



**41190** Cable for vertical and/or horizontal wiring of modules with integrated IP protection, length 485 mm  
**41191** Cable for internal connection of modules with integrated IP protection, length 245 mm

Pixel - Front modules



**41105.01** Audio/Video teleloop for 41007 unit, grey  
**41118.01** Display for 41018 unit, grey  
**41119.01** Keypad for 41019 and 41020 units, grey  
**41121.01** Blank module, grey  
**41115** Name-plate for 41015 unit

**41105.02** As above, slate grey  
**41118.02** As above, slate grey  
**41119.02** As above, slate grey  
**41121.02** As above, slate grey  
**41105.03** As above, white  
**41118.03** As above, white  
**41119.03** As above, white  
**41121.03** As above, white



**41110** Single axial button  
**41111** Single rocker button  
**41112** Double axial button  
**41113.01** Single blank button, grey  
**41113.02** As above, slate grey  
**41113.03** As above, white  
**41114.01** Double blank button, grey  
**41114.02** As above, slate grey  
**41114.03** As above, white

ADDITIONAL INSTALLATION ACCESSORIES

To complete the installation of entrance panels with flush or surface mounting boxes, rainproof frames, universal adapters and other accessories, see from page 37

Pixel and Pixel Heavy series: video entrance panels

Pixel Heavy - Front modules (IK09, IK10 and IP54)



**41270** Audio/video for 41006.1 unit, no buttons, with teleloop, IK10 and IP54 protection  
**41271** Audio/Video for 41006.1 unit, 1-button, with teleloop, IK10 and IP54 protection  
**41272** Audio/Video for 41006.1 unit, 2-button, with teleloop, IK10 and IP54 protection  
**41274** Audio/Video for 41006.1 unit, 4-button in 2 rows, with teleloop, IK10 and IP54 protection  
**41223** For 41010 unit, 3-button, IK10 and IP54 protection  
**41225** For 41010 unit, 5-button, IK10 and IP54 protection



**41230** For 41010 unit, 10-button in 2 rows, IK10 and IP54 protection  
**41218** Display for 41018 unit, IK09 and IP54 protection  
**41219** Keypad for 41019 and 41020 unit, IK09 and IP54 protection  
**41215** Name-plate for 41015 unit, IK10 and IP54 protection  
**41221** Blank module, IK10 and IP54 protection

ADDITIONAL INSTALLATION ACCESSORIES

To complete the installation of entrance panels with flush mounting boxes, universal adapters and other accessories, see from page 39

Pixel and Pixel Heavy series: video entrance panels

Video entrance panels with electronic unit



**K41007.01** Pixel audio/video entrance panel, with 1-button, flush mounting box and audio/video unit 41007  
**K41007.02** As above, with 2-button  
**K41007.03** Pixel Heavy audio/video entrance panel, with 1-button, flush mounting box and audio/video unit 41007  
**K41007.04** As above, with 2-button

Pixel Up series: video entrance panels

Video entrance panels with audio/video electronic unit



**40414.S** Audio/video with 4x4 reader hole, stainless steel  
**40415.S** Audio/Video, stainless steel

ADDITIONAL INSTALLATION ACCESSORIES

To complete the installation of entrance panels with flush or surface mounting boxes and other accessories, see from page 38



**Pixel, Pixel Heavy e Pixel Up series: video entryphones**

Video entryphones and accessories

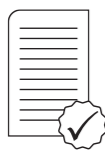


**▲ 40610.S**  
7" hand free video entryphone, for surface mounting, integrated Wi-Fi for call forwarding to smartphone with app, 7" LCD monitor, capacitive keypad for video entry and quick functions, bracket for surface mounting on round or rectangular boxes, PoE or 12 Vdc supply, black

**▲ 40597**  
Desktop for 7" video entryphone

**Software licenses**

Software licenses for compatible SIP devices



**40690**  
Licence activation codes for 1 SIP audio/video call

**▲ 40690.1W**  
Licence activation codes for 1 Web SIP audio/video call

**40690.10**  
As above, 10 licenses

**▲ 40690.10W**  
As above, 10 licenses

**40690.50**  
As above, 50 licenses

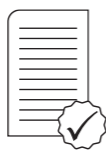
**▲ 40690.50W**  
As above, 50 licenses

**40690.100**  
As above, 100 licenses

**▲ 40690.100W**  
As above, 100 licenses

**40690.200**  
As above, 200 licenses

**▲ 40690.200W**  
As above, 200 licenses



**40690.A**  
Licence activation codes for 1 SIP audio call

**▲ 40690.A1W**  
Licence activation codes for 1 Web SIP audio call

**40690.A10**  
As above, 10 licenses

**▲ 40690.A10W**  
As above, 10 licenses

**40690.A50**  
As above, 50 licenses

**▲ 40690.A50W**  
As above, 50 licenses

**40690.A100**  
As above, 100 licenses

**▲ 40690.A100W**  
As above, 100 licenses

**40690.A200**  
As above, 200 licenses

**▲ 40690.A200W**  
As above, 200 licenses



**Energia Positiva.** Insieme

