

01560

5" colour touch screen for control and home automation system control, KNX standard, complete with mounting frame for installation in 2-3 module boxes.

The device is designed to supervise and control KNX systems via interaction with the touch screen interface. The device is completely configurable from ETS without the use of additional plug-ins.

CHARACTERISTICS.

- Supply voltage: BUS 30 V DC SELV.
- Absorption: 5 mA a 30 VDC
- Auxiliary supply voltage 24-30 VDC SELV
- Auxiliary absorption: < 100 mA a 30 VDC
- Operating temperature: -5°C to +45°C (indoor use)
- Proximity sensor detection: ~30 cm
- Dimensions 86x148.8x11.5 cm (L x H x W)
- Weight: 0.3 kg

CONNECTIONS.

The connection to the bus and to the auxiliary power supply is via KNX standard terminals on the back of the device. **Auxiliary power supply is always necessary.**

Mounting

The device can be mounted both vertically or horizontally inside 2- and 3-module boxes at a height of between 120 and 140 cm from the ground and at least 15-20 cm away from doors or windows.

OPERATION.

- Control and supervision of lights, dimmers, roller shutters, scenarios
- Control and supervision of temperature, air conditioners, fan coils
- Scenario control
- Audio control and supervision
- Air quality display
- Display of energy consumed, absorbed current and voltage
- Logic functions
- Proximity sensor, brightness control, light bar, tactile feedback
- Date and time, temperature and humidity display
- Password, screensaver and panel block for cleaning operations

CONFIGURATION.

Device and related parameter configuration occurs using the ETS software (version 5.7 and later). To launch configuration and assign a physical address, enable the related option in the "Settings" menu directly from the device graphic interface. When the programming mode is enabled, the light bar becomes red.

All the updated ETS databanks can be downloaded from the "Software" section of the www.vimar.com website.

INSTALLATION RULES.

- Installation must be carried out by qualified persons in compliance with the current regulations regarding the installation of electrical equipment in the country where the products are installed.
- Protect the device from dirt, moisture and accidental damage during storage, transportation and operation.
- Dirty devices can be cleaned with a dry cloth or a cloth dampened with soapy water. Never, under any circumstances, use solvents or caustic substances.

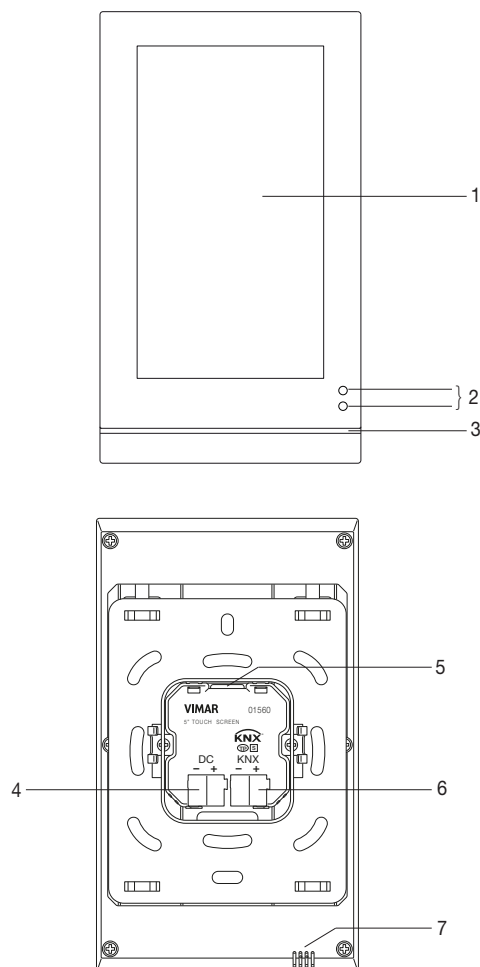
REGULATORY COMPLIANCE.

EMC directive. RoHS directive.

Standards EN 60669-2-5, EN IEC 60730-2-7, EN IEC 60730-2-9, EN IEC 63044, EN IEC 63000.

REACH (EU) Regulation no. 1907/2006 – Art.33. The product may contain traces of lead.

FRONT AND BACK VIEW



- 1: Touch screen monitor
- 2: Proximity sensor
- 3: Light bar
- 4: 24-30 VDC Auxiliary power supply
- 5: Compartment for SD/SDHC card up to 32GB
- 6: 30 VDC KNX BUS terminals
- 7: Indoor temperature sensor

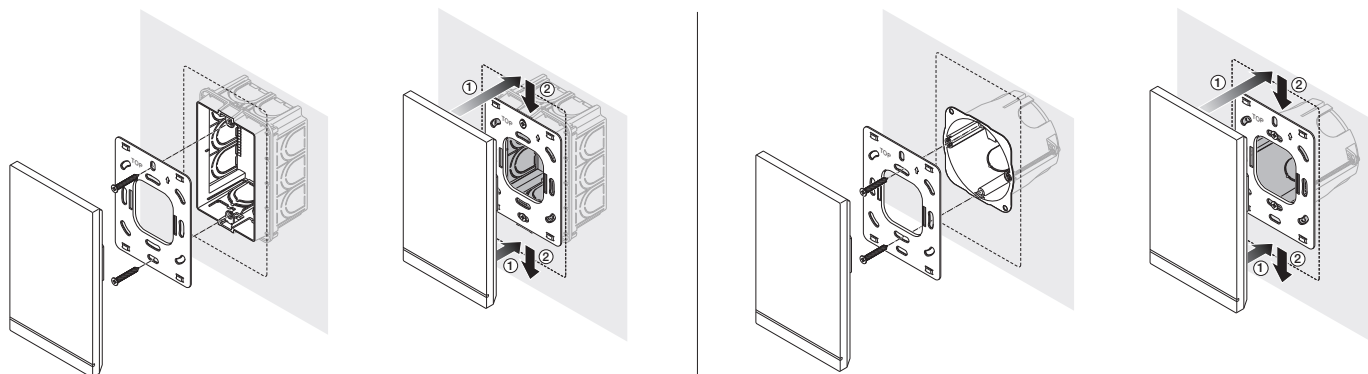


WEEE - User information

The crossed bin symbol on the appliance or on its packaging indicates that the product at the end of its life must be collected separately from other waste. The user must therefore hand the equipment at the end of its life cycle over to the appropriate municipal centres for the differentiated collection of electrical and electronic waste. As an alternative to independent management, you can deliver the equipment you want to dispose of free of charge to the distributor when purchasing a new appliance of an equivalent type. You can also deliver electronic products to be disposed of that are smaller than 25 cm for free, with no obligation to purchase, to electronics distributors with a sales area of at least 400 m². Proper sorted waste collection for subsequent recycling, processing and environmentally conscious disposal of the old equipment helps to prevent any possible negative impact on the environment and human health while promoting the practice of reusing and/or recycling materials used in manufacture.

INSTALLATION

VERTICAL



HORIZONTAL

