



## MASCOT: TV-RD-SAT single conn.male outlet 1dB i

**06456.01**

Wiring devices / Traditional wiring devices / MASCOT / Devices

### TV-RD-SAT single conn.male outlet 1dB i

Coaxial TV-RD-SAT 5-2400 MHz socket outlet, single connection, with IEC 60169-2 male connector, connection attenuation 1 dB, ivory. Allows the passage of d.c. current and control signals. (24 V 500 mA max)

#### Product Status

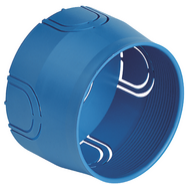
2 - Will be discontinued

#### Minimum order quantity

5 NR



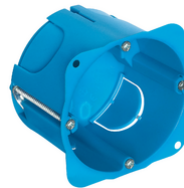
You may also be interested in



V71001 - Flush mounting box ø 60mm light blue



V71001.AU - Flush mounting box ø 60mm light black



V71701 - Round flush-mount box f/hollow wall blue

## Drawings

### Technical data

- **Class group:** Antenna and satellite technique
- **Class:** Antenna socket box
- **Model:** End socket
- **Cover:** None
- **Tap loss at 860 MHz:** 0,10 dB
- **Tap loss at 2150 MHz:** 0,20 dB
- **Number of outlets:** 1
- **Suitable for remote power supply:** Yes
- **Type of fastening:** Snap mounting (engagement)
- **Colour:** Beige
- **RAL-number (similar):** 9001
- **Material:** Plastic

## Certifications

- 00. CE Marking - EU
- 37. Marking - Morocco
- 99. WEEE Directive ([download](#))

## Packaging



8 007352 101685

**Code** 8007352101685  
**Quantity** 1 NR  
**Dim.** 8x8x3.6 [cm]  
**Weight** 79.5 [g]



8 007352 104761

**Code** 8007352104761  
**Quantity** 5 NR  
**Dim.** 15.9x11.4x8.9 [cm]  
**Weight** 466.8 [g]

## Legal

Vimar reserves the right to change at any time and without notice the characteristics of the products reported. Installation should be carried out by qualified staff in compliance with the current regulations regarding the installation of electrical equipment in the country where the products are installed. For the terms of use of the information on the product info sheet see [Conditions of Use](#).